



5th Annual Hudson Valley Affordable Housing Summit
Resilient Housing

Westhab builds and preserves high-quality, permanent affordable and supportive housing that meets the needs of the communities we serve.

Gouverneur Place, Bronx



Mixed Income Supportive and Affordable Housing
68 Units, New construction

We build:

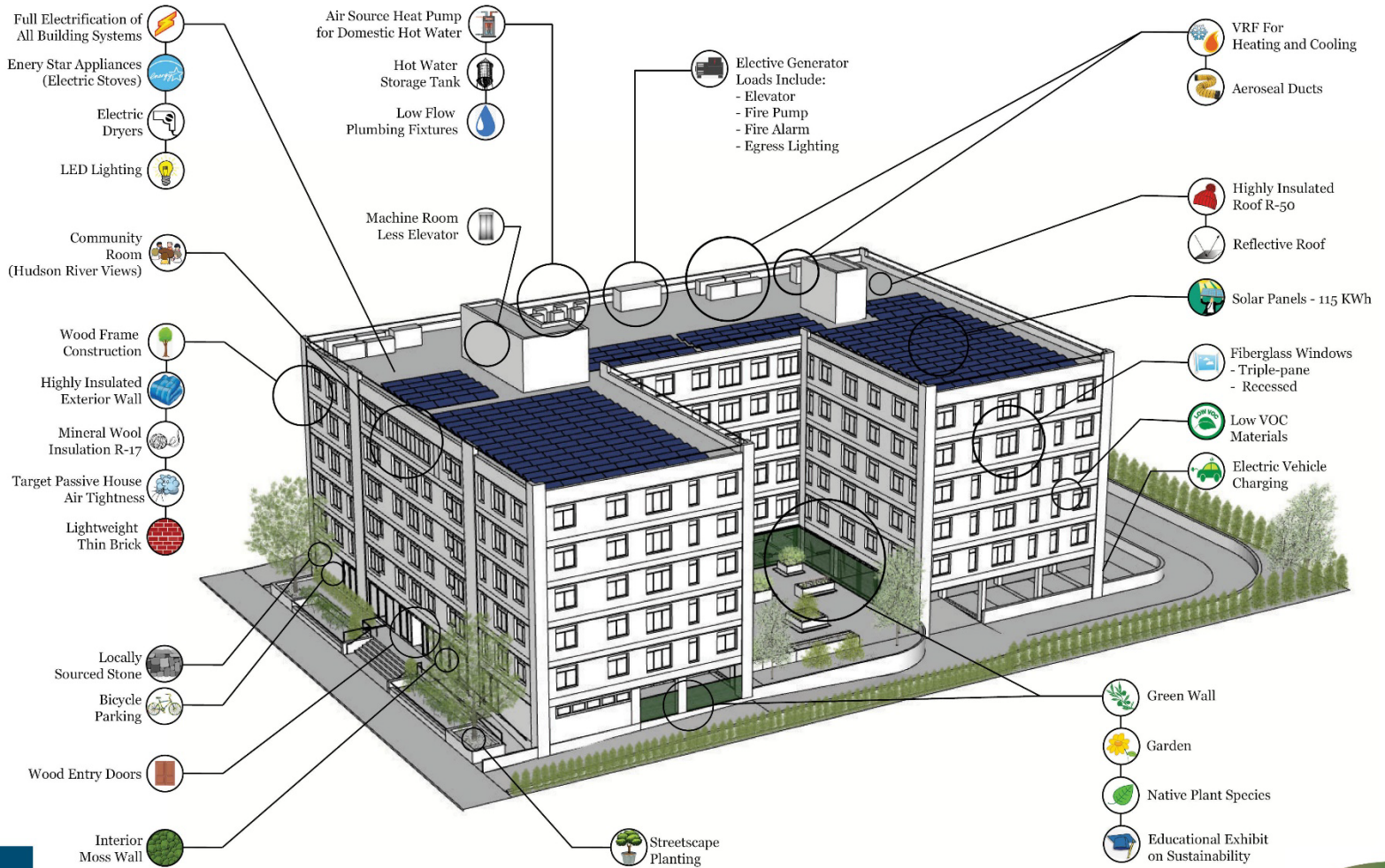
- ✓ Workforce Housing
- ✓ Mixed-Income Housing
- ✓ Senior Housing
- ✓ Veterans Housing
- ✓ Supportive and Special Needs Housing
- ✓ Transitional Housing

New Construction

- ✓ Site Layout
- ✓ Building Envelope
- ✓ Electrification
- ✓ Equipment Location
- ✓ Generator (elective)
- ✓ Renewable Energy



Hudson Hill
Yonkers, NY
113 affordable units
Passive House Design



Adaptive Re-Use / Renovations

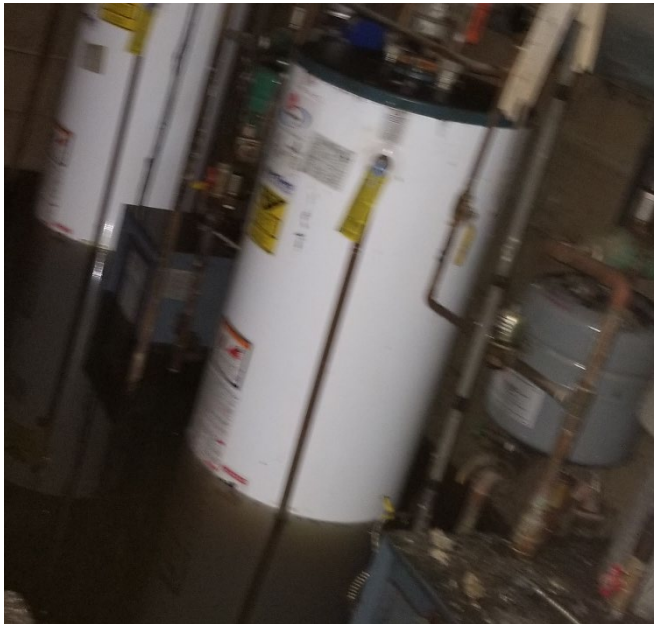
- ✓ Similarities to New Construction
 - ✓ Building Envelope
 - ✓ Electrification
 - ✓ Equipment Location
- ✓ Challenges
 - ✓ Structural Improvements
 - ✓ Environmental
 - ✓ Financing



Briarwood Rapid Re-Housing
Queens, NY
175 Bed Transitional Shelter
Enterprise Green Communities

Hurricane IDA

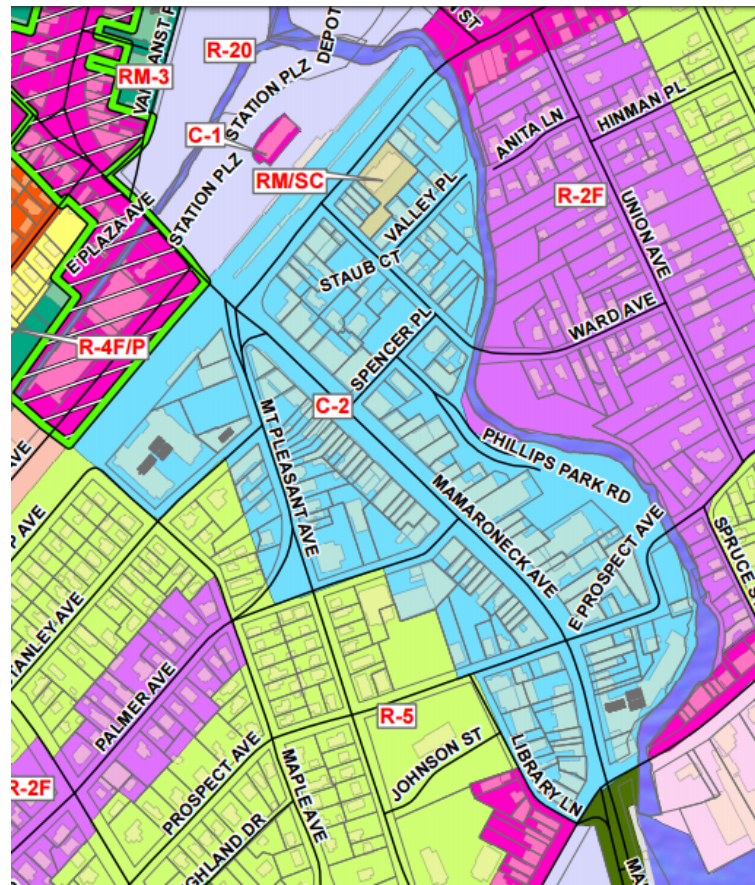
- ✓ Damage and power outages
- ✓ Down units and relocation
- ✓ Insurance



Advocacy

- ✓ Zoning
- ✓ Flooding
- ✓ Existing Affordable Housing
- ✓ Options
 - ✓ New Housing
 - ✓ Renovation Improvements

Village of Mamaroneck Zoning Map



By the Numbers

- *Led the way in Westchester's reduction of homelessness by 70% , closing 2 shelters.*
- *Moved 8,000+ homeless households into permanent housing*
- *Build or renovated 912 affordable housing units at an investment of \$130M+*
- *Placed 6,000+ public assistance recipients into employment*
- *Provided life changing experiences for 10,000 homeless/at-risk young people*

WESTHAB

Building Communities. Changing Lives.



*For More Info:
www.westhab.org*

