



**Office of Planning
and Development**

Resilient, Equitable, Age-Friendly Communities—Weaving a Complex Web

Paul Beyer

Director of Smart Growth

An Office of New York Department of State

May 10, 2022



**Office of Planning
and Development**

COMPLEXITY CAN GET VERY COMPLICATED

THE ART OF BUNDLING AND RE-ASSEMBLING

An Office of New York Department of State

May 10, 2022

WHAT DOES A QUARK HAVE TO DO WITH A JAGUAR?

- “The world of the quark has everything to do with a jaguar circling in the night.”
- “If someone says that he can think or talk about quantum physics without becoming dizzy, that shows only that he has not understood anything whatever about it.”
- “What I try to do in the book is to trace the chain of relationships running from elementary particles, fundamental building blocks of matter everywhere in the universe, such as quarks, all the way to complex entities, and in particular complex adaptive systems like jaguars.”

Murray Gell-Mann, *The Quark and the Jaguar: Adventures in the Simple and Complex*



**Office of Planning
and Development**

“Networks are present everywhere. All we need is an eye for them.”

Albert Laszlo Barabasi

An Office of New York Department of State

May 10, 2022



Office of Planning and Development

“Creativity is just connecting things. When you ask creative people how they did something, they feel a little guilty because they didn't really do it, they just saw something. It seemed obvious to them after a while.”

Steve Jobs

An Office of New York Department of State

May 10, 2022

WHAT IS A SNOWMOBILE?

(According to Col. John Boyd)

- Treads from a tank
- Skis
- Handlebars from a bike
- Engine from a motor-boat

Breaking concepts down into their constituent parts and re-assembling them into something new, creative and innovative. ~*Col. John Boyd*



**Office of Planning
and Development**

ISN'T THIS WHAT PLANNERS ARE SUPPOSED TO DO?

An Office of New York Department of State

May 10, 2022

THE PIECES OF THE PUZZLE

Age-Friendly Housing and Communities

- Age-Friendly NY/Health Across All Policies
- Model Local Laws for Senior Housing
- Livable Communities for ALL Ages/Livable NY Resource Manual
- AARP/WHO 8 Domains of Livability
- Statewide Aging Master Plan

RESILIENT HOUSING AND COMMUNITIES

- DOS Model Local Laws to Increase Resilience
- RISE Community Resiliency Self-Assessment Tool
- Smart Growth Countywide Resiliency Plans
- Community Risk and Resiliency Act (CRRA) of 2014
- Climate Leadership and Community Protection Act
- HUD Community Resilience Toolkit

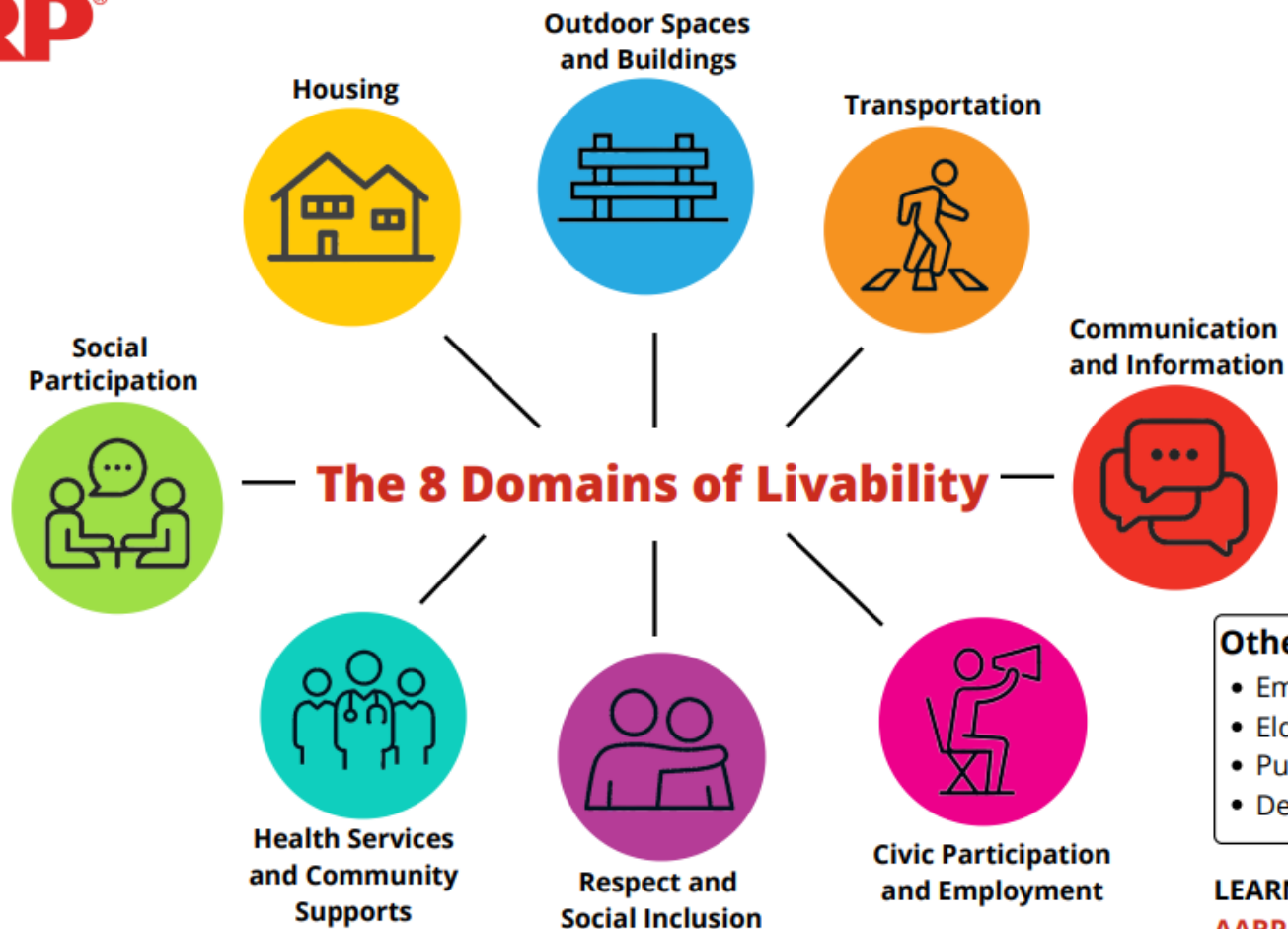
PROGRAMMATIC OPPORTUNITIES

- Downtown Revitalization Initiative (DRI)
- Transit-Oriented Development (TOD)
- Smart Growth Planning and Zoning Program (DOS)
- Statewide Aging Master Plan
- Comprehensive Housing Plan

AGE-FRIENDLY NY/HEALTH ACROSS ALL POLICIES EXECUTIVE ORDER

The perfect confluence of public health, aging in place and smart growth

- DOS Smart Growth
- DOH Prevention Agenda
- State Office for the Aging
- AARP/WHO Network of Livable States and Communities



Other Areas

- Emergency Preparedness
- Elder abuse
- Public safety
- Dementia-friendly

LEARN MORE

[AARP.org/Livable](https://www.aarp.org/Livable)

TEN STEPS TO WALKABILITY

Compact, lively town center

Many people of all ages and abilities walking many hours

Low speed streets, distributed volumes

Public places with inviting features: benches, restrooms, shade, water and art

Celebrated public space and public life, parades, markets, festivals, awards

Fine grained streets, many trails, transit links

Convenient, safe and efficient crossings

Neighborhood schools and parks, within one quarter mile or one eighth mile

Land use and transportation partnerships

Affordable, inspiring, well maintained streets and homes.

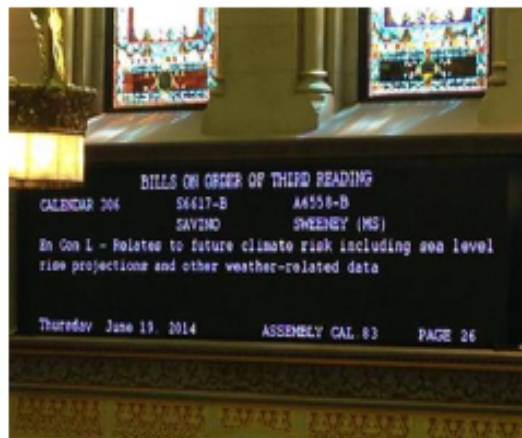
DOH PREVENTION AGENDA

The State's plan for improving public health outcomes and reducing health disparities.

The critical role of the “Built Environment” in addressing the social determinants of health!

Community Risk and Resiliency Act

- Requires sea-level rise projections (DEC)
- Requires applicant demonstration of consideration of sea-level rise, storm surge and flooding in specified facility-siting regulations, permits and funding programs, and guidance on implementation (DEC, DOS)
- Adds consideration of sea-level rise, storm surge and flooding to Smart Growth Public Infrastructure Policy Act criteria and guidance (DEC, DOS)
- Requires model local laws to enhance resiliency (DOS, DEC)
- Requires guidance on use of natural resiliency measures to reduce risk by January 1, 2017 (DEC, DOS)



RESILIENCE PRINCIPLES FOR NEW YORK COMMUNITIES

RISK: KNOW IT, AVOID IT, REDUCE IT.



Know Your Risks:

Use maps, risk viewers, and hazard mitigation plans to learn about risks to an area.

Avoid Risk:

Apply land use planning concepts that place development and community assets out of hazardous areas.

Reduce Risk:

Explore options to manage risks through the full range of measures, including non-structural and structural approaches.

MAINTAIN CAPACITY TO ADAPT



Consider different scenarios of future conditions and be prepared to change course if necessary.

Possible scenario variables include:

- Climate stressors
- Development patterns
- Planning timeframes

MULTIPLE BENEFITS FROM ONE MEASURE



Seek solutions that provide multiple benefits and address multiple goals.

Aim to identify resilience measures that are win-win solutions, such as green roofs.

Green roofs:

- Absorb rainwater
- Reduce building energy usage
- Reduce urban heat island effect

LET NATURE DO THE WORK



Conserve, enhance, and restore naturally resilient features and systems.

Left alone or supported through restoration actions, many natural features maintain or improve in their risk reduction benefits over time. Natural features can reduce risk by:

- Absorbing water
- Acting as a buffer
- Slowing wave or water energy
- Stabilizing or supplying sediment
- Conveying or draining water

STACK RESILIENCY MEASURES



Create a layered approach of multiple measures to provide greater reliability should one measure fail.

Reliance on one measure can prove catastrophic, such as when the levees in New Orleans failed during Hurricane Katrina.

Vary the types of measures, from land use policies to site specific measures, and have backups in place.

SHARE COSTS AND BENEFITS EQUITABLY



Identify the impact on existing inequities and the potential costs to future generations.

Consider long-term impacts as well as impacts to neighbors to avoid transferring or deferring risks to others. Addressing risk and improving resilience of vulnerable or marginalized populations requires special consideration and extensive, meaningful public engagement, including identifying and addressing existing inequities.

MAKE INCLUSIVE AND TRANSPARENT DECISIONS



Transparency, accountability, and inclusivity tend to lead to better decisions and reduce conflicts.

Develop an inclusive and equitable public outreach and engagement plan and clearly outline the public's role in the planning and decision-making process.

Build trust by soliciting input in multiple ways throughout the process and follow through and communicate outcomes.

CLIMATE LEADERSHIP AND COMMUNITY PROTECTION ACT

It's the Equity, stupid!

- 35-40% of benefits directed to “Disadvantaged Communities”
- Similar to President Biden’s Justice 40 Executive Order
- Underscores the 4Es of Smart Growth and Sustainability

Collaborative, Inclusive Governance at its Best

- Recommendations Developed by topical advisory panels (Pace!)
- Reviewed by the Climate Justice Working Group

DOWNTOWN REVITALIZATION INITIATIVE (DRI)

- Inter-Agency Triumvirate—DOS/ESD/HCR
- Energy/Climate—the 4th E (NYSERDA/NYPA)
- The Crown Jewel of Smart Growth and Age-Friendly Communities

Case Studies: <https://www.ny.gov/downtown-revitalization-initiative/dri-focus-case-studies-successful-dri-communities-projects>

DRI is a Planning & Implementation Program

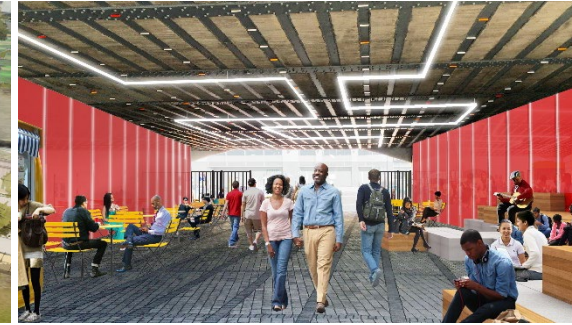


TRANSFORMATIVE OPPORTUNITIES

Provide a range of potential transformative projects

Applications may include:

- Projects ready for implementation within 1-2 years
- Transformative opportunities to be further explored during the planning process
- Grant/loan fund





Office of Planning and Development

Governor Hochul's Comprehensive Housing Plan to Create Affordable Units, Increase Supportive and Senior Housing, Advance Homeownership Opportunities and Make Homes More Environmentally Friendly.

An Office of New York Department of State

May 10, 2022

PUT 'EM TOGETHER AND WHAT'VE YOU GOT?...

Case studies and opportunities for bundling

- DRI
- Age-Friendly NY/Smart Growth Grant Program
- Transit-Oriented Development
- Statewide Aging Master Plan
- Comprehensive Housing Plan

OSWEGO DRI

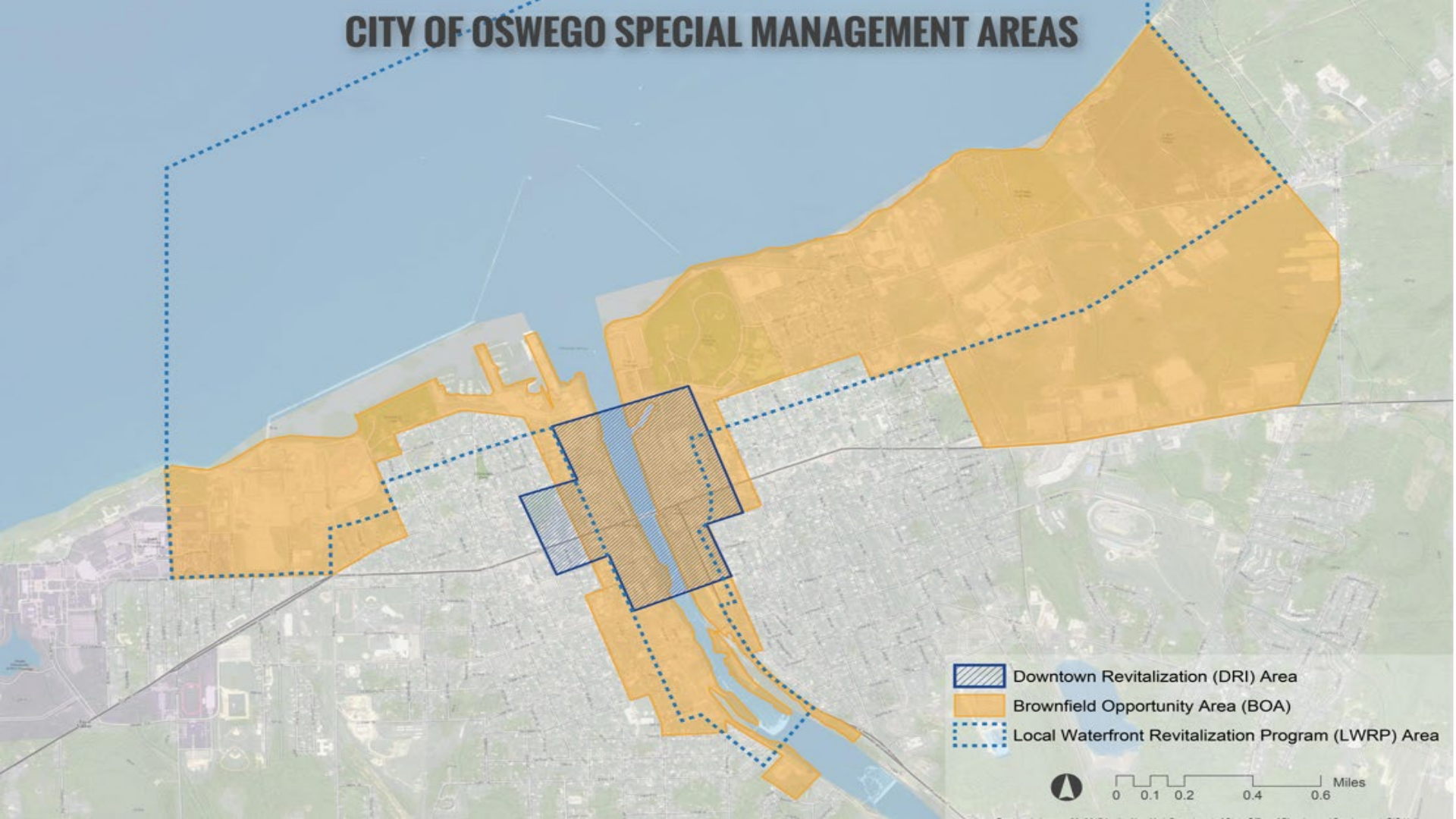
Smart, Resilient and Equitable




- Organic, Planned and Market-Based Housing
- Inter-Programmatic, Collaborative Bundling—
LWRP/BOA/NYPA EVolve/REDI/CLEAR
- Amenities for All Ages

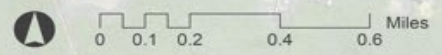
Oswego DRI Case Study:

[https://www.ny.gov/sites/default/files/atoms/files/DRI_CaseStudy_Oswego.p
df](https://www.ny.gov/sites/default/files/atoms/files/DRI_CaseStudy_Oswego.pdf)

CITY OF OSWEGO SPECIAL MANAGEMENT AREAS



-  Downtown Revitalization (DRI) Area
-  Brownfield Opportunity Area (BOA)
-  Local Waterfront Revitalization Program (LWRP) Area





Harbor View Square—Before

05/18/2016



NO
PARKING
VIOLATION
POLICE
ORDER

NEW YORK
State of
Good Jobs
Downtown
Revitalization
Initiative
Harbor View Square

Project Manager: Kevin J. ...
Architect: ...
General Contractor: ...

Andrea M. ...
Governor

Rodolfo ...
Secretary of State

Elizabeth ...
NYC Commissioner

Edward ...
SD Commissioner

Harbor View Square—During Construction



Harbor View Square—After



East Lake Commons—Before

East Lake Commons—After





Wrights Landing Marina



IS THIS ALSO WRIGHTS LANDING MARINA?



International Pier

AGE-FRIENDLY NY/SMART GROWTH GRANT PROGRAM

Complexity in action...

- Grants to Counties to Become AARP Age-Friendly and/or Emulate State Executive Order
- Partnership with Health Foundation
- Regional Centers of Excellence in Health and Aging
- Statewide Learning Collaborative/NY Academy of Medicine
- Administered Jointly by DOS/DOH/SOFA
- Winner of Public Health Innovation Award



**Office of Planning
and Development**

TRANSIT-ORIENTED DEVELOPMENT

*A microcosm of sustainable, resilient, equitable and
age-friendly development*

An Office of New York Department of State

May 10, 2022

SMART GROWTH PLANNING AND ZONING GRANT PROGRAM

The legal and policy framework for Smart Growth

- Derived from the CLCPA
- Comp Plans; Areas Plans (e.g., TODs and downtowns); Zoning Ordinances
- Must Embrace Smart Growth Principles

Program Link: <https://cfaresources.ny.gov/standalone-cfa-programs>



Office of Planning
and Development

EPILOGUE—NOTES FROM THE FIELD...

THIS AIN'T EASY, FOLKS!

An Office of New York Department of State

May 10, 2022



(Source: Leyland Associates)