

**A****B**

## HOUSING TYPE

# MIXED-USE HOUSING

Also called artist lofts, mixed-use development and studios

### DESCRIPTION

#### Definition

Structure consisting of both housing units and space for non-housing related uses e.g. community space, gym, retail and or dining that are typically on the ground floor with the housing units above it.

#### Housing Units

The number of housing units will be dependent on the size of the mixed-use housing development.

#### Most Common Types

Mixed-Income Housing - Development approach that is inclusive of a broad range of income levels in addition to offering flexible space for supplemental uses e.g. health clinic or grocery store. (Image A & B)

Live-Work - Place of work and living are within the same structure e.g. small business on the ground floor with housing above it. (Image C)

### NOTABLE FEATURES

#### Active Streetscape

Non-housing related uses e.g. a shop or market can activate the street and increase the likelihood of human connection amongst residents.

#### Hyper local amenities

Provides those living in the housing units with an assortment of amenities close by to where they live.

**C**

23

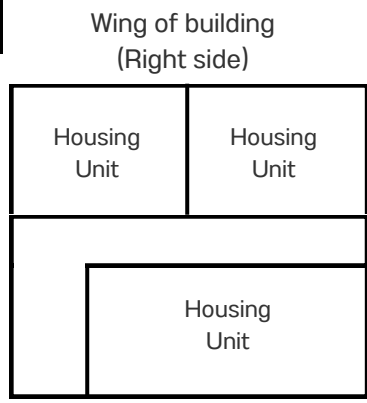
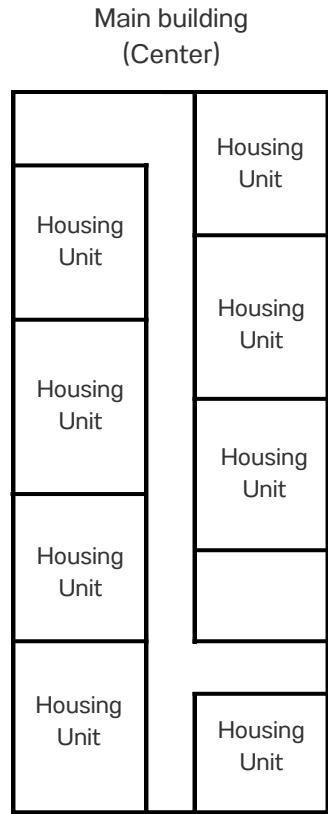
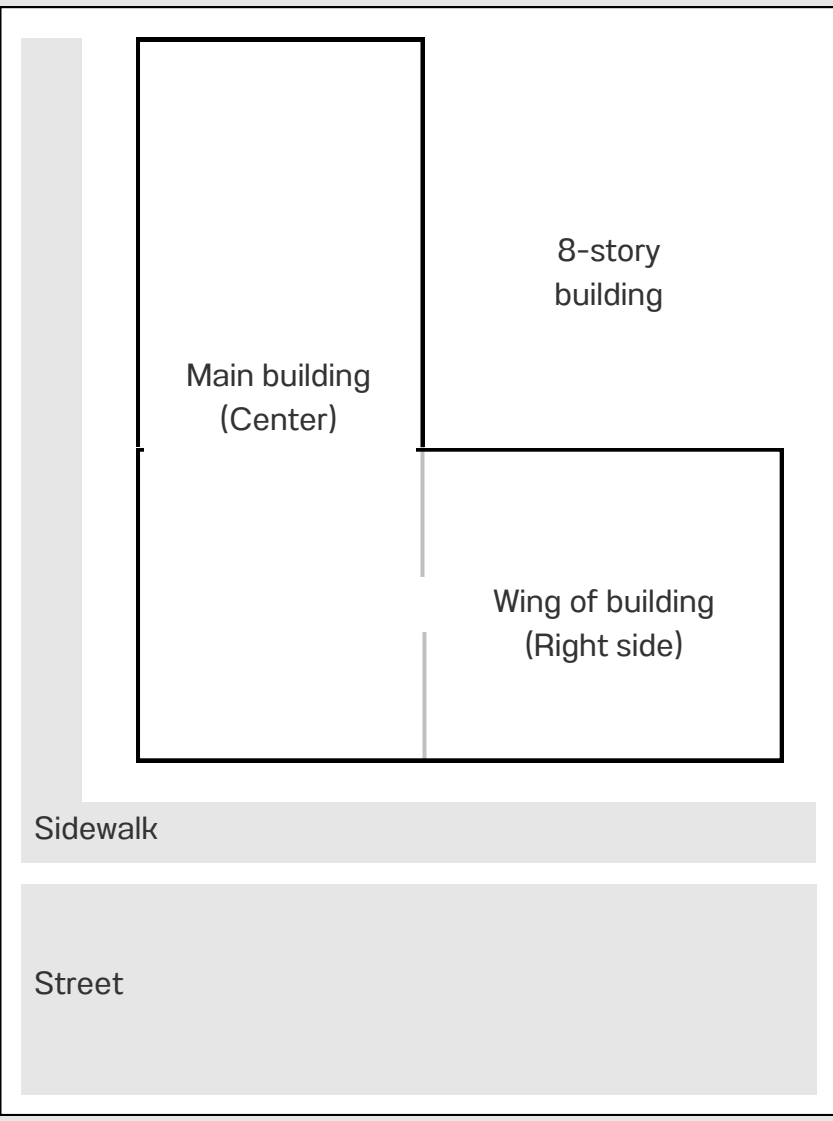
Photo Credit for:

Image A: Photo credit to Tanner Burgdorf

Image B: Courtesy of the Urban Redevelopment Authority of Pittsburgh

Image C: Photo credit to Tanner Burgdorf

# SAMPLE: MIXED-USE HOUSING ON A PHYSICAL SITE



L shaped mixed-income housing with 6-floors of housing that could have community space on the ground level.

**Best Practices & General Resources**  
**Live-Work: General Overview**  
 Full link: <https://missingmiddlehousing.com/types/live-work>

**Citations**  
 1. Khoury, Maria. Leaning Toward Live-Work Units. Lean Urbanism. <https://leanurbanism.org/leaning-toward-live-work-units/>  
 2. Missing Middle Housing. Live-Work. Missing Middle Housing. <https://missingmiddlehousing.com/types/live-work>