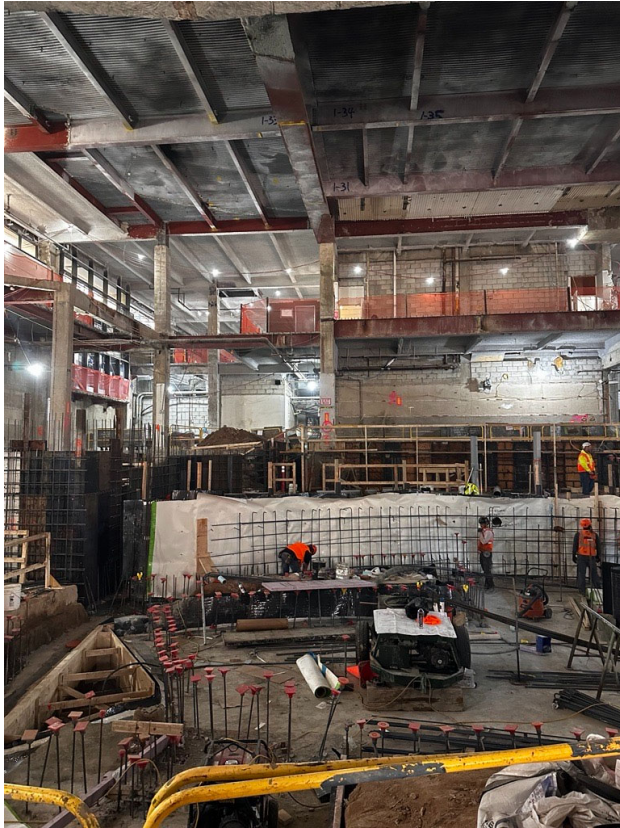


1 Pace Plaza East Renovation - Progress Photos



Rebar installation and concrete slab and footing pours ongoing in Large Venue.

1 Pace Plaza East Renovation - Progress Photos



Rebar installation and concrete slab and footing pours ongoing in Large Venue.

1 Pace Plaza East Renovation - Progress Photos



Façade demolition is complete for future Medium Venue.

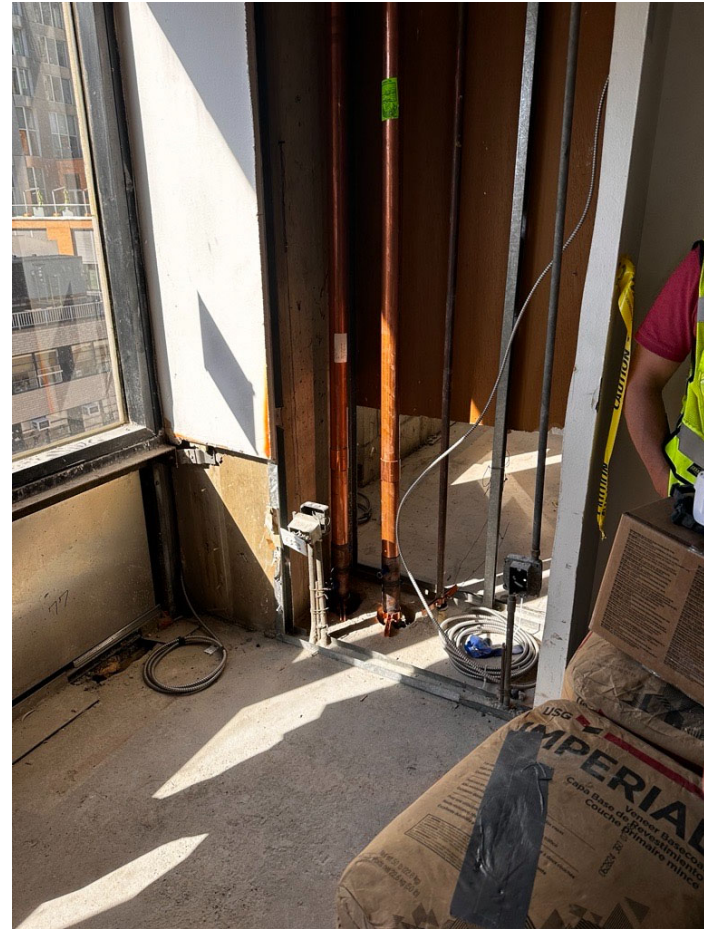


New structural steel installation at Medium Venue.

1 Pace Plaza East Renovation - Progress Photos



Electrical conduit installation in the Maria's Tower.



New mechanical riser installation in the Maria's Tower.