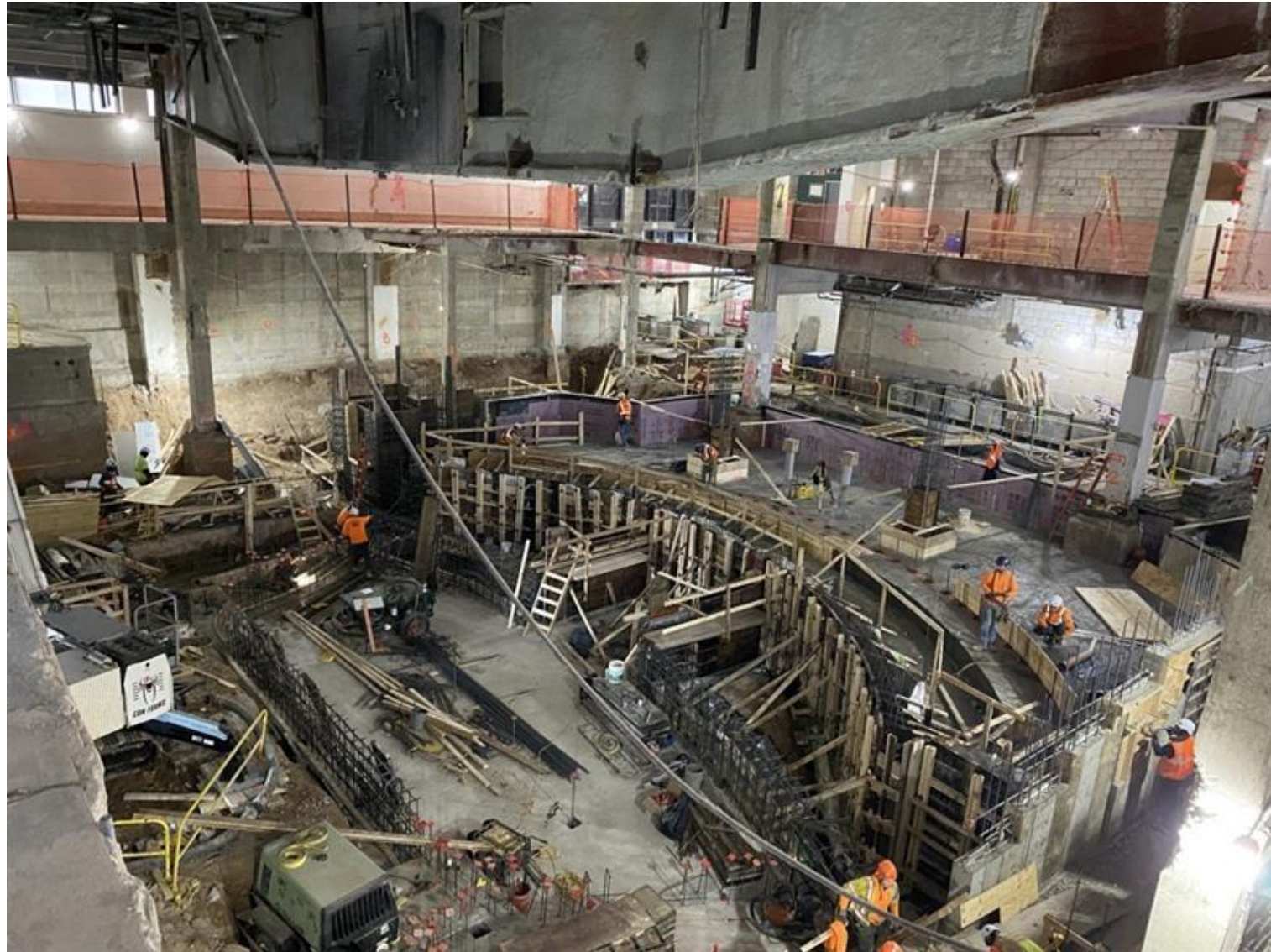
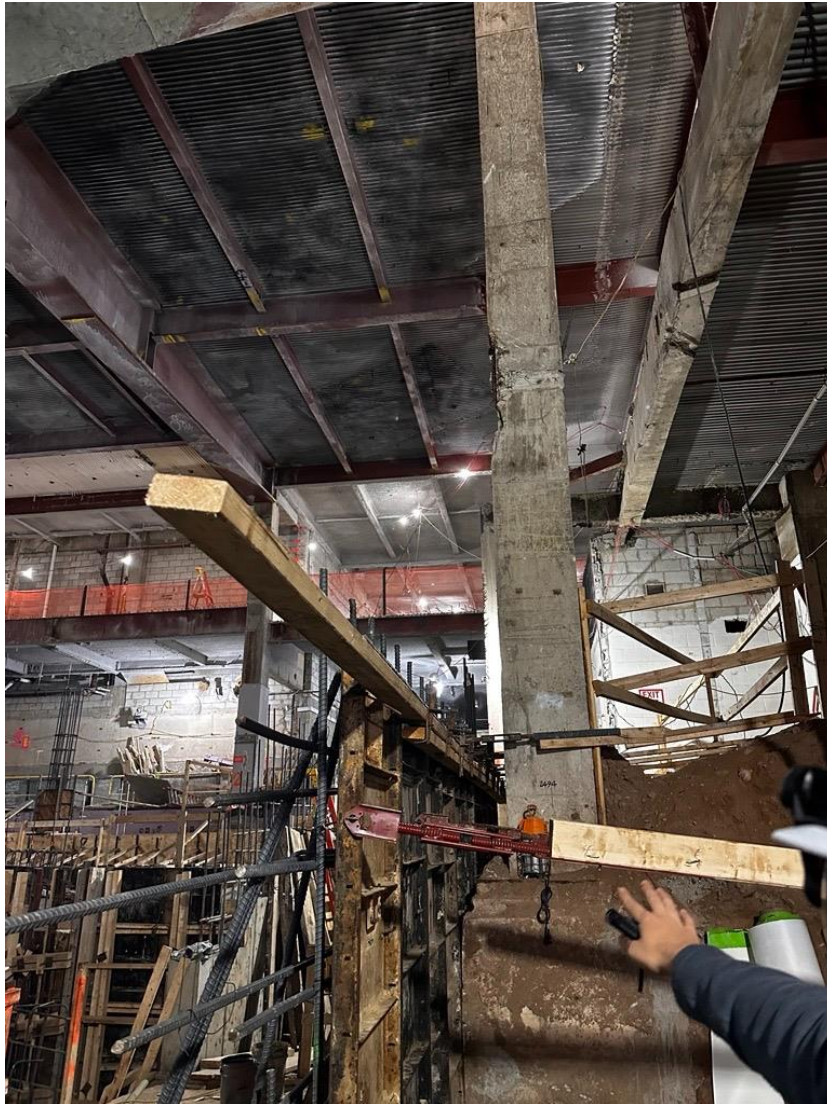


# 1 Pace Plaza East Renovation - Progress Photos

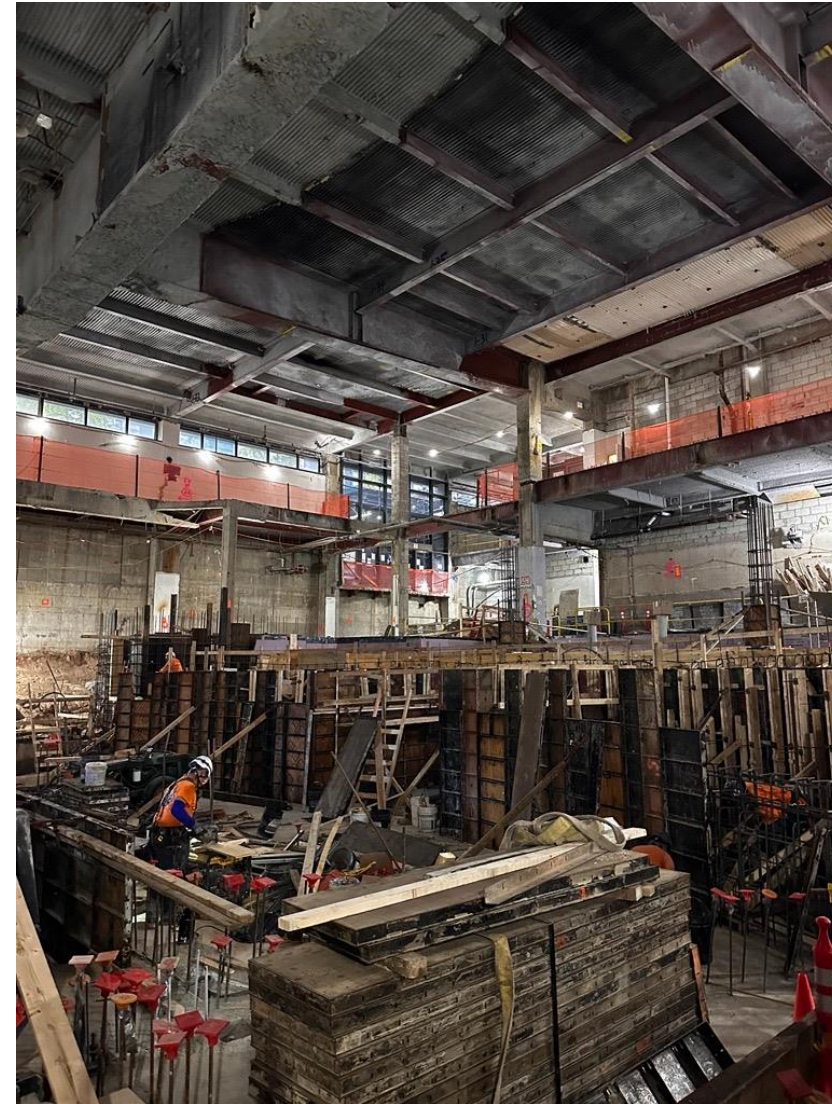


Rebar installation, concrete slab and footing pours ongoing in Large Venue.

# 1 Pace Plaza East Renovation - Progress Photos



The contractor is surveying the existing structural columns and piers to determine need of reinforcement.



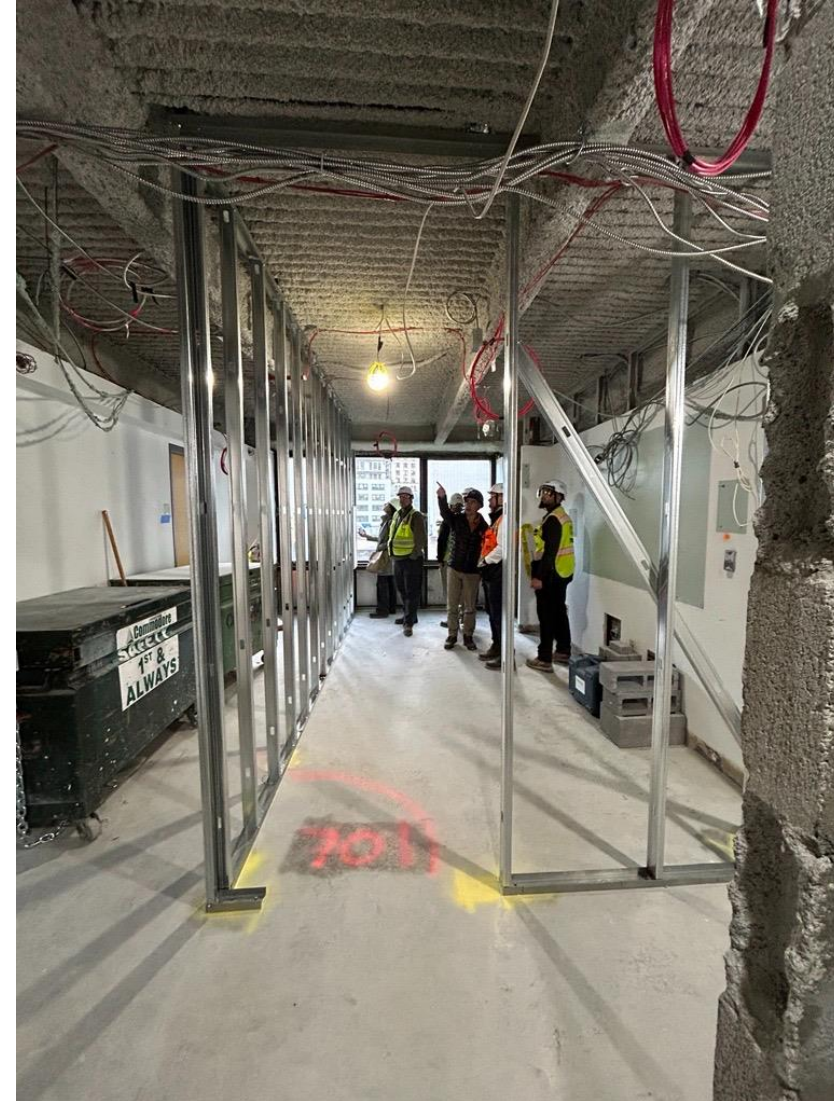
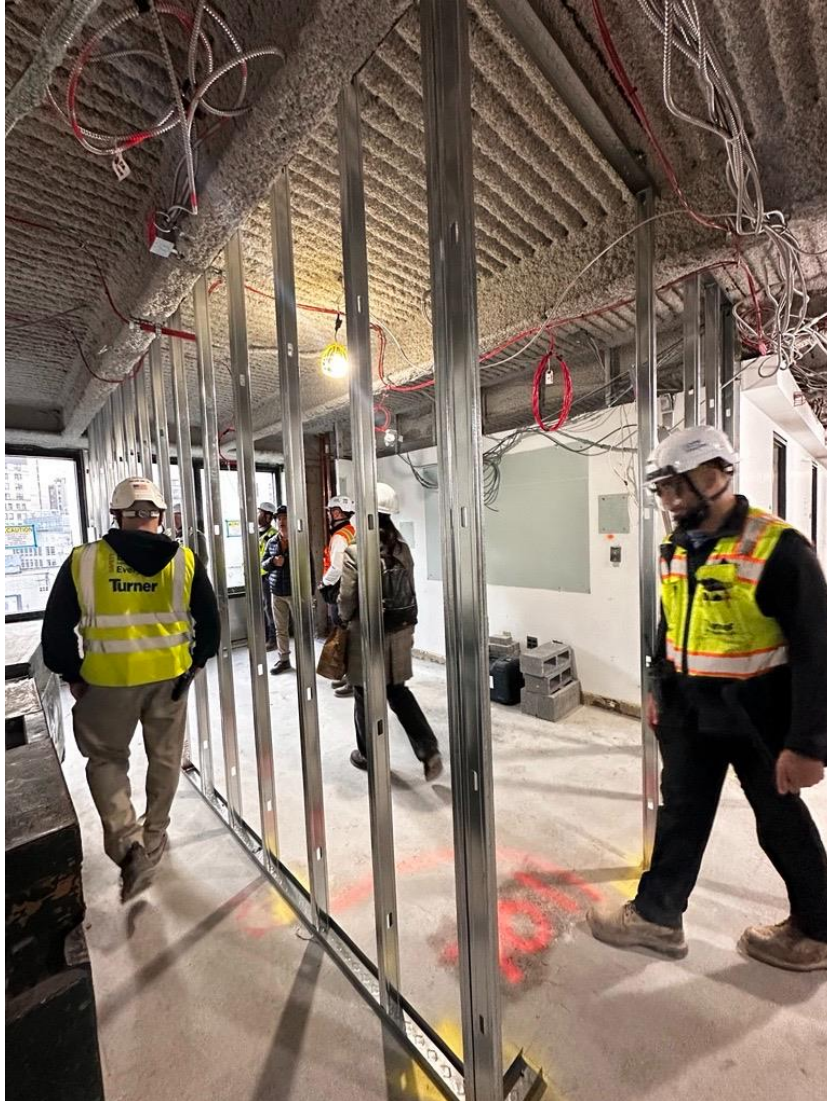
Continued rebar installation in the Large Venue.

# 1 Pace Plaza East Renovation - Progress Photos



2<sup>nd</sup> Floor Large Venue Grid Iron hanging is in progress.

# 1 Pace Plaza East Renovation - Progress Photos



Framing and electrical rough-in has begun in Maria's Tower.