

1 Pace Plaza East Renovation - Progress Photos



Overhead structural demolition began this week, protections are installed on the new stage slab.

1 Pace Plaza East Renovation - Progress Photos



View of Small Venue weather wall from interior looking out at PPW courtyard.

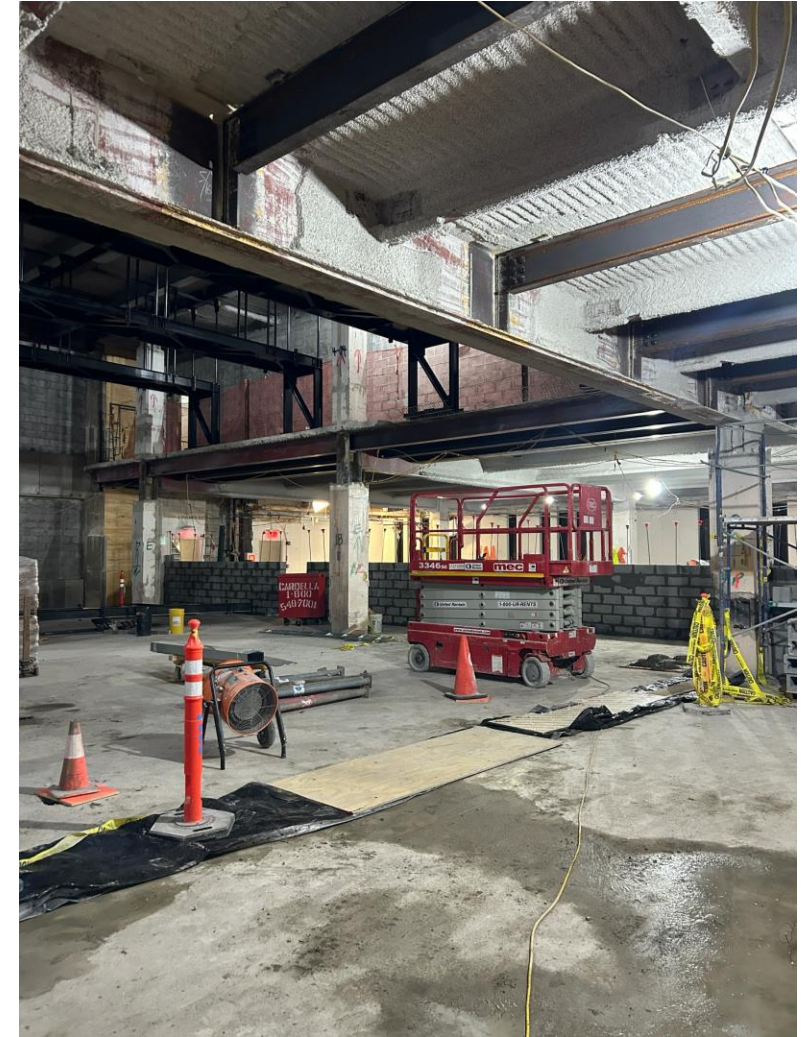


Ductwork installation has started on the 2nd Floor.

1 Pace Plaza East Renovation - Progress Photos

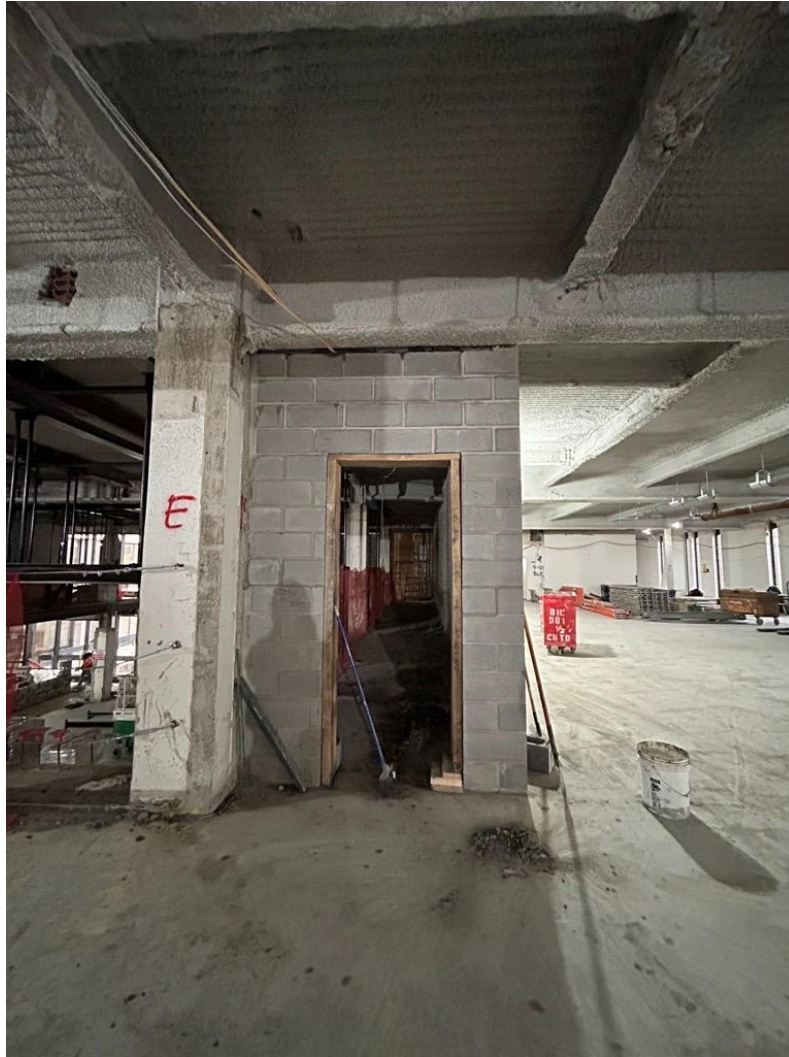


View of Medium Venue from 3rd Floor.



Medium Venue CMU wall installation.

1 Pace Plaza East Renovation - Progress Photos



Medium Venue gallery CMU walls complete.



CMU block wall installation ongoing throughout.