

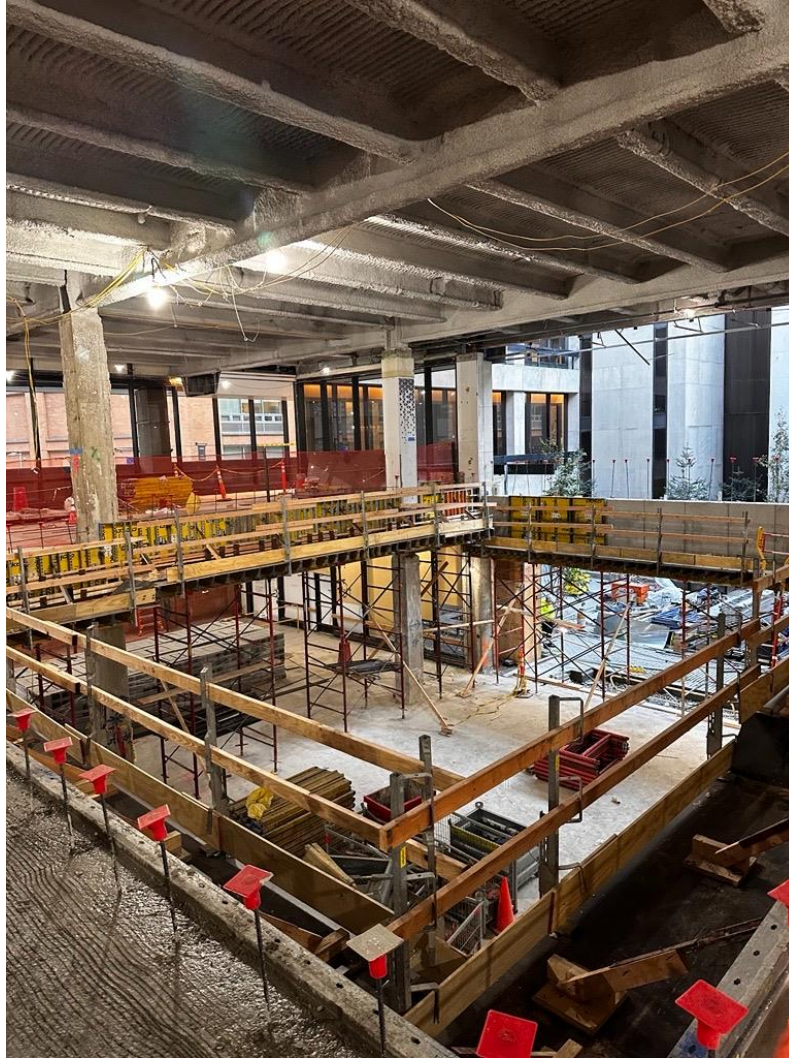
# 1 Pace Plaza East Renovation - Progress Photos



Concrete pour in balcony seating. Protections have been installed over the new stage slab in preparation for overhead structural demolition.



# 1 Pace Plaza East Renovation - Progress Photos



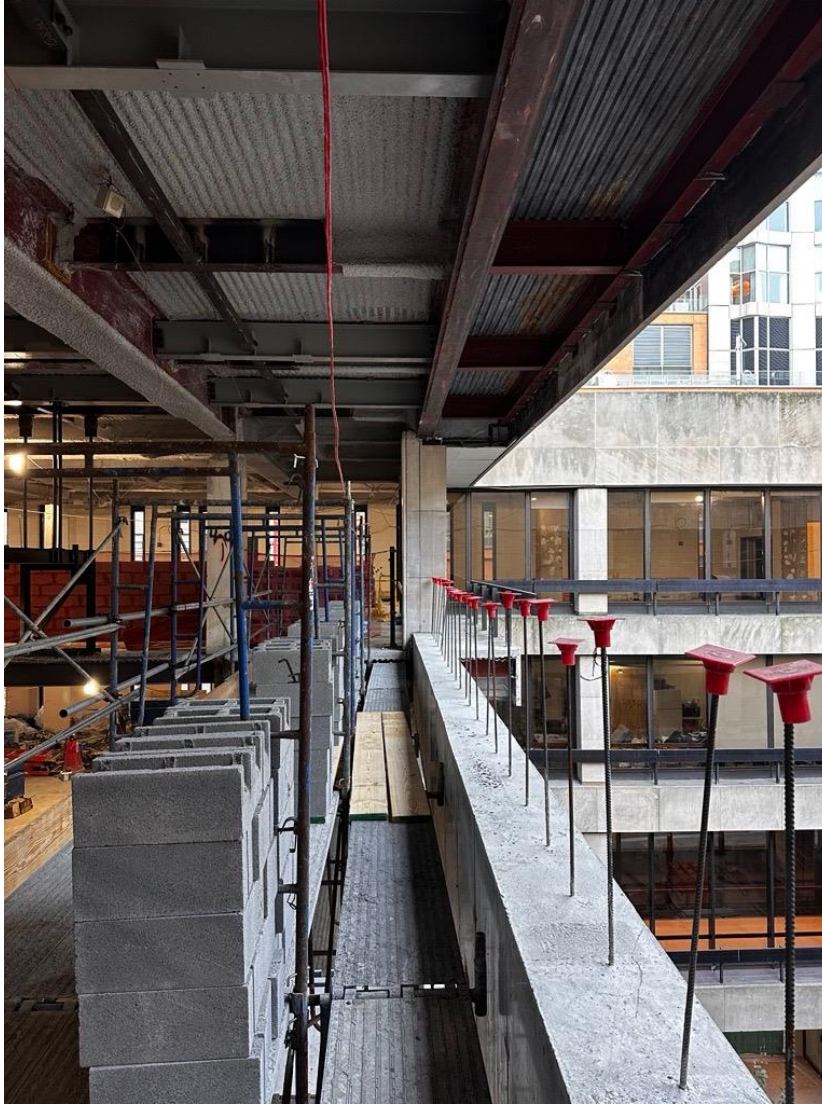
Preparation for Small Venue CMU wall installation.



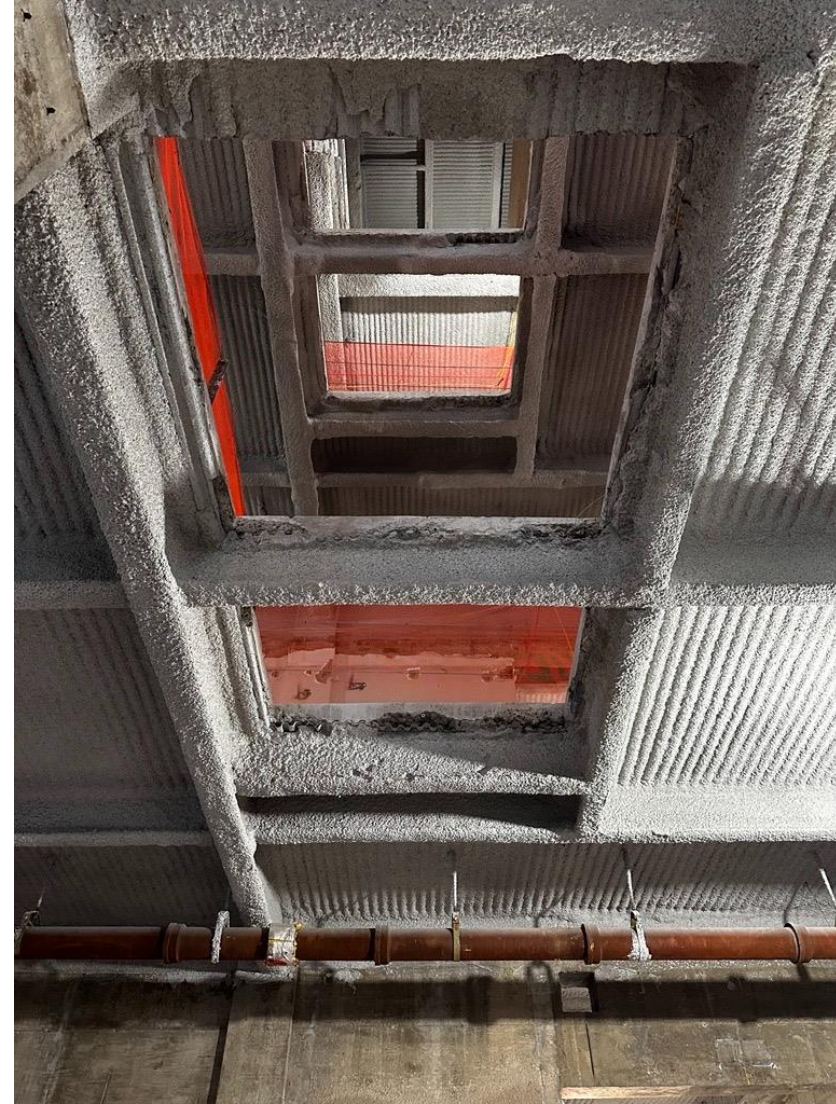
View of Small and Medium Venues from the Courtyard.



# 1 Pace Plaza East Renovation - Progress Photos



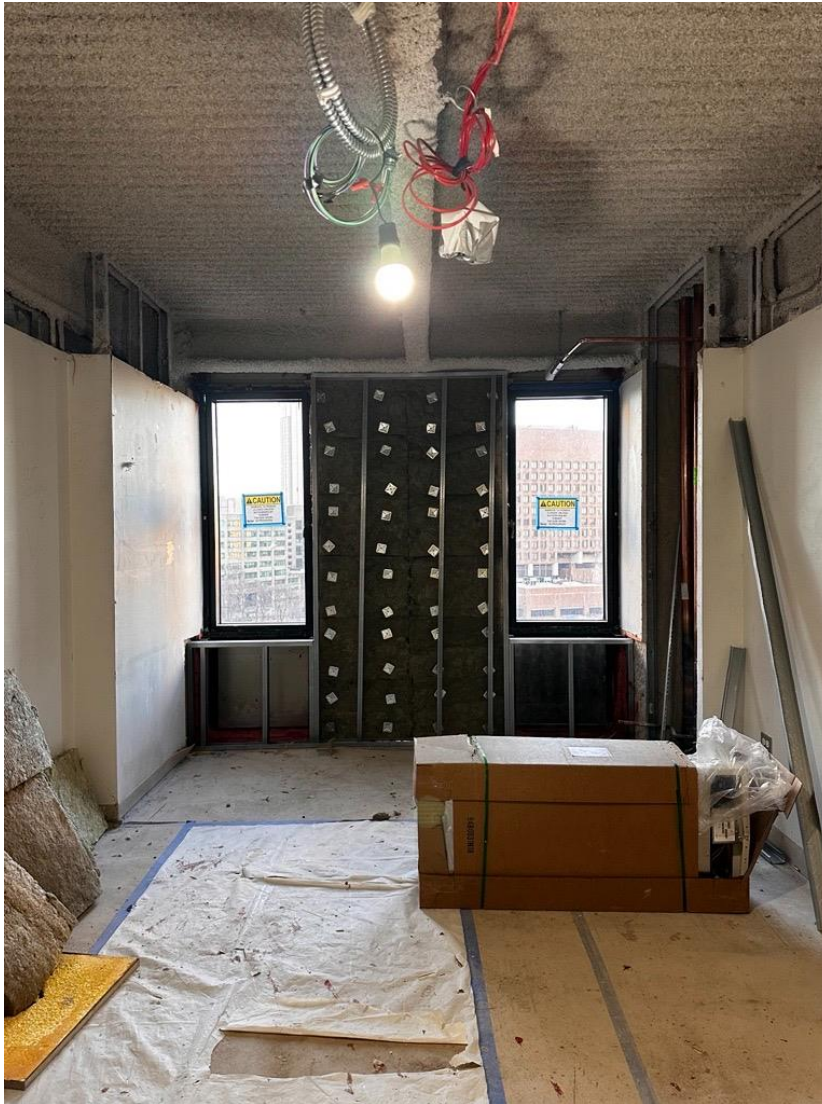
CMU wall work ongoing at venue openings.



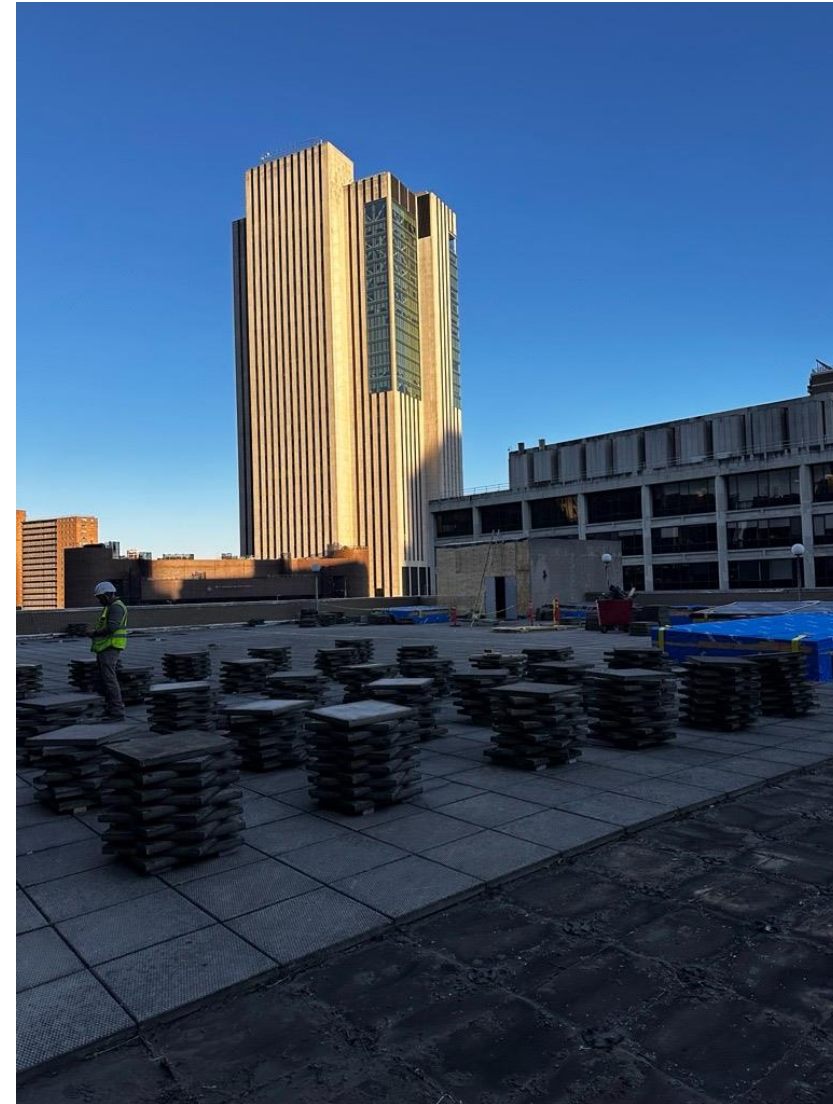
Slab openings for utilities and ductwork.



# 1 Pace Plaza East Renovation - Progress Photos



Perimeter insulation installation is ongoing in Maria's Tower.



4th Floor paver removal for roof work.