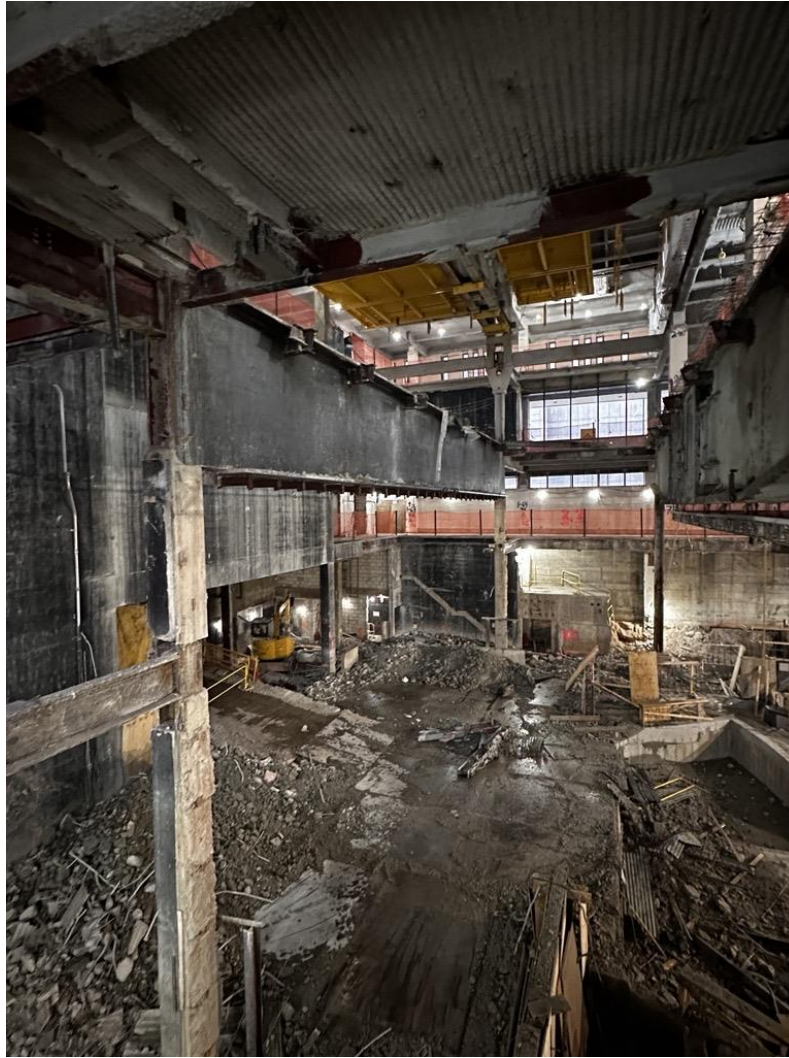


1 Pace Plaza East Renovation - Progress Photos



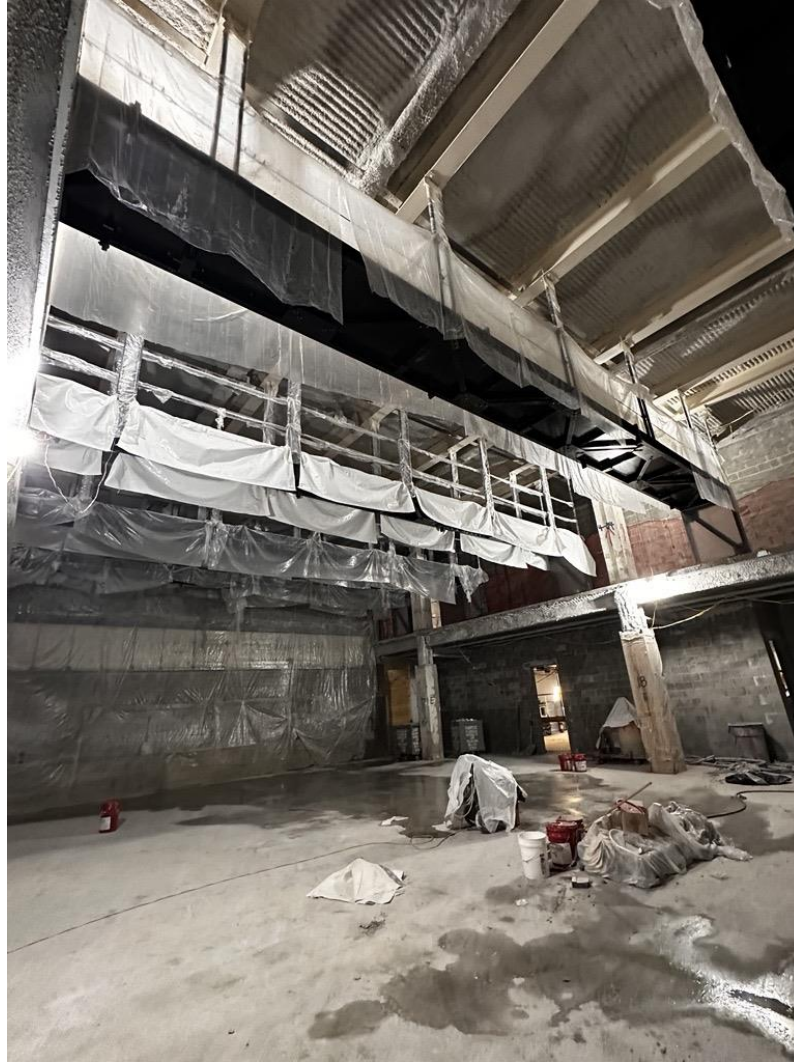
Ongoing structural demolition at the Large Venue.

1 Pace Plaza East Renovation - Progress Photos

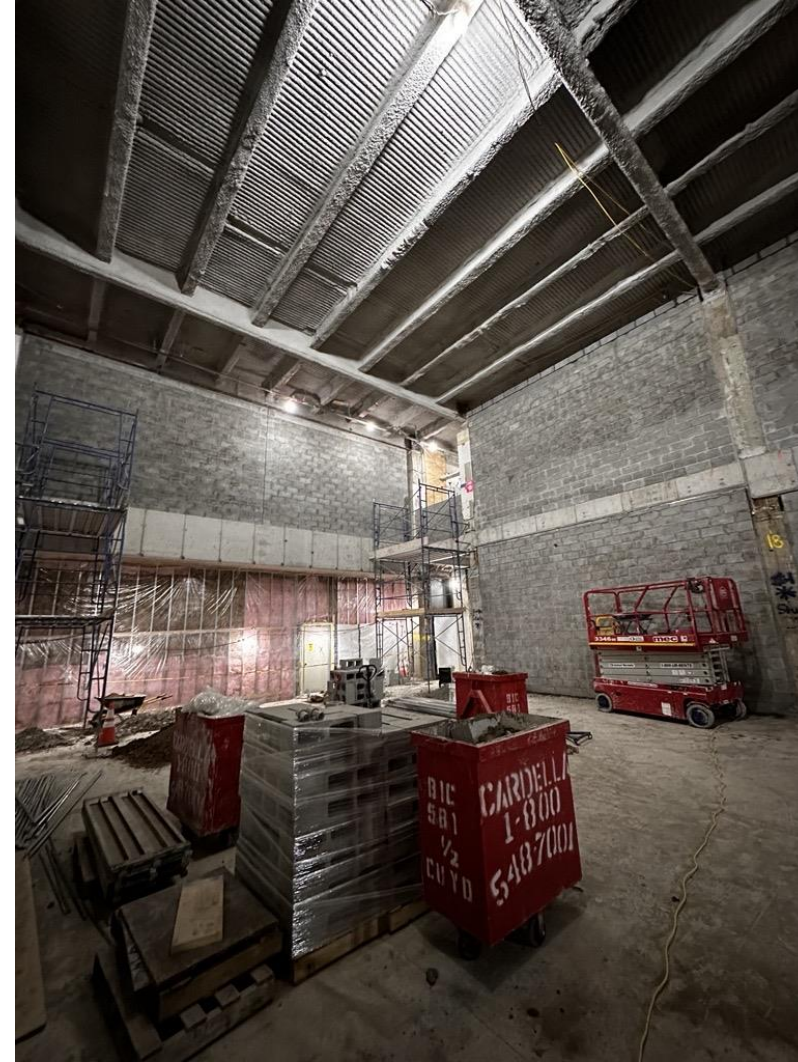


View of structural demolition in Large Venue from 2nd Floor looking north.

1 Pace Plaza East Renovation - Progress Photos



Installation of intumescent paint the in the Medium Venue.



New CMU wall progress in the Small Venue.

1 Pace Plaza East Renovation - Progress Photos



New concrete pad installation for new HVAC equipment on the 4th Floor roof.



Plaster column finish mockup on the 3rd Floor.

1 Pace Plaza East Renovation - Progress Photos



Installation of bathroom framing in Maria's Tower.



Installation of ceiling grid and lighting in Maria's Tower.