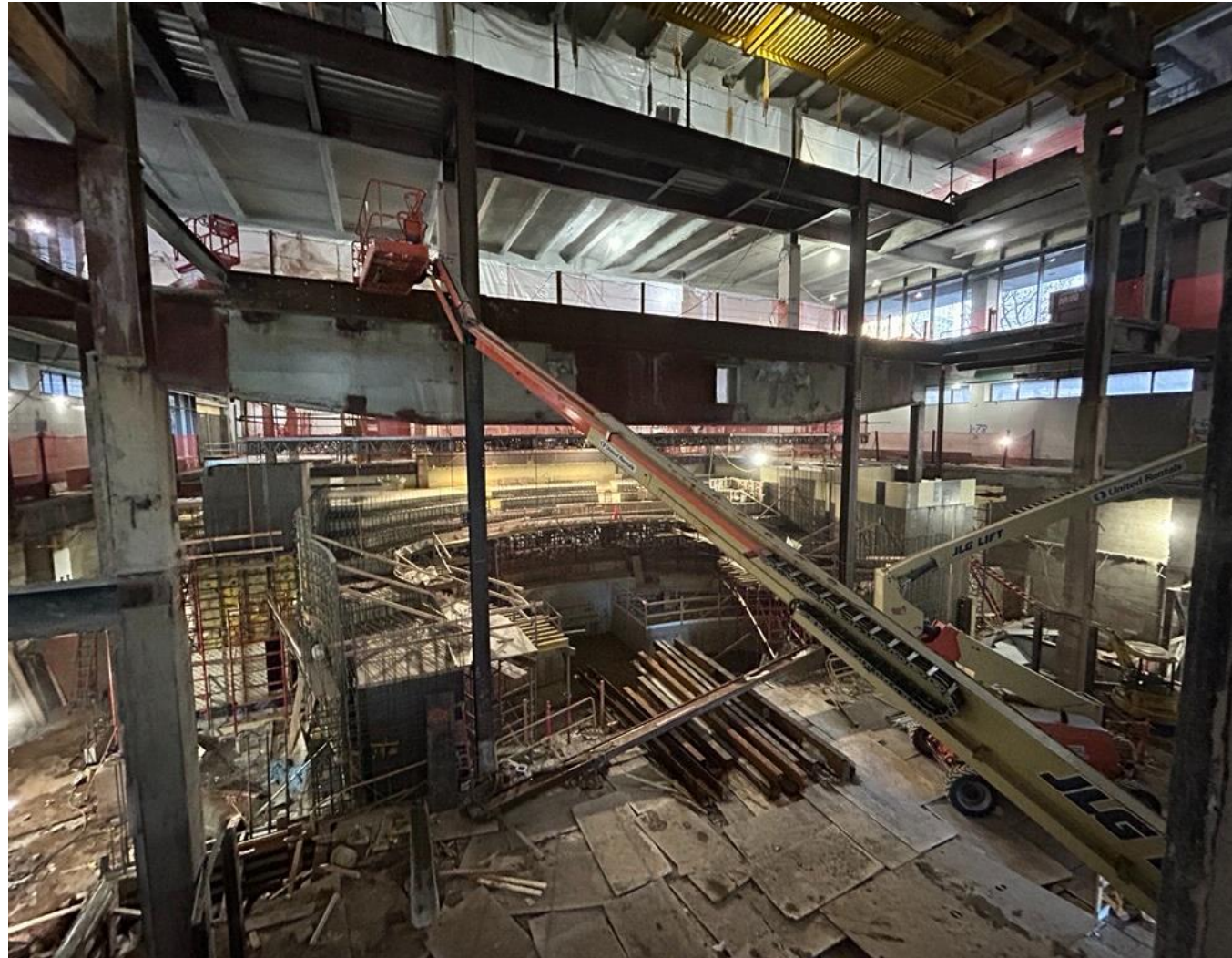
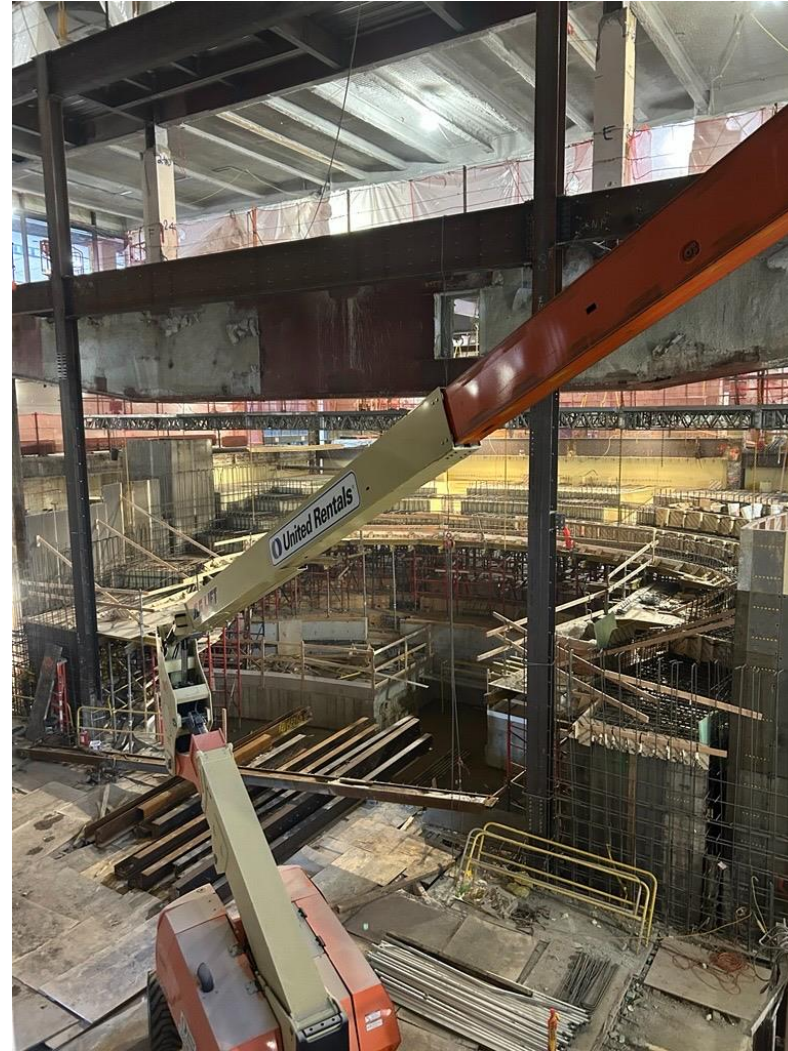
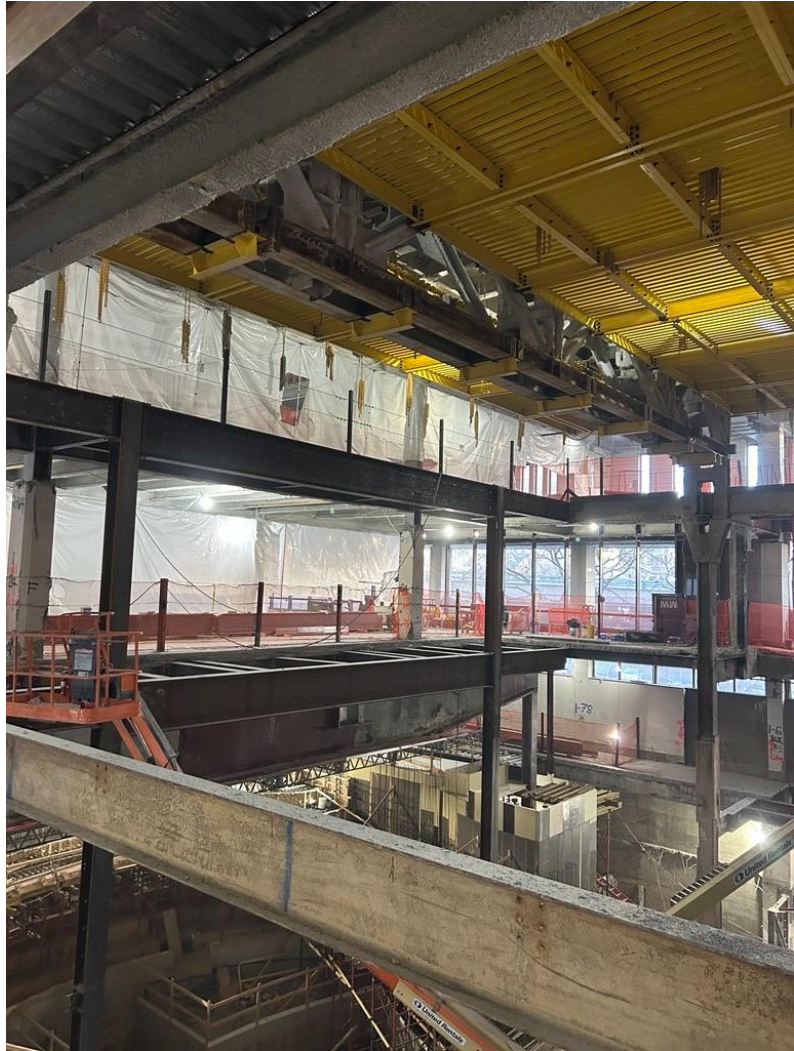


1 Pace Plaza East Renovation - Progress Photos



Large Venue stage and proscenium column installation is ongoing along with concrete scaffolding and formwork.

1 Pace Plaza East Renovation - Progress Photos



Ongoing structural and concrete work in the Schimmel Theatre.

1 Pace Plaza East Renovation - Progress Photos



1st Floor mechanical ductwork installation is ongoing.

1 Pace Plaza East Renovation - Progress Photos



Interior partition installation on the 18th Floor of Maria's Tower.



New mechanical unit installation in Maria's Tower.