

1 Pace Plaza East Renovation - Progress Photos



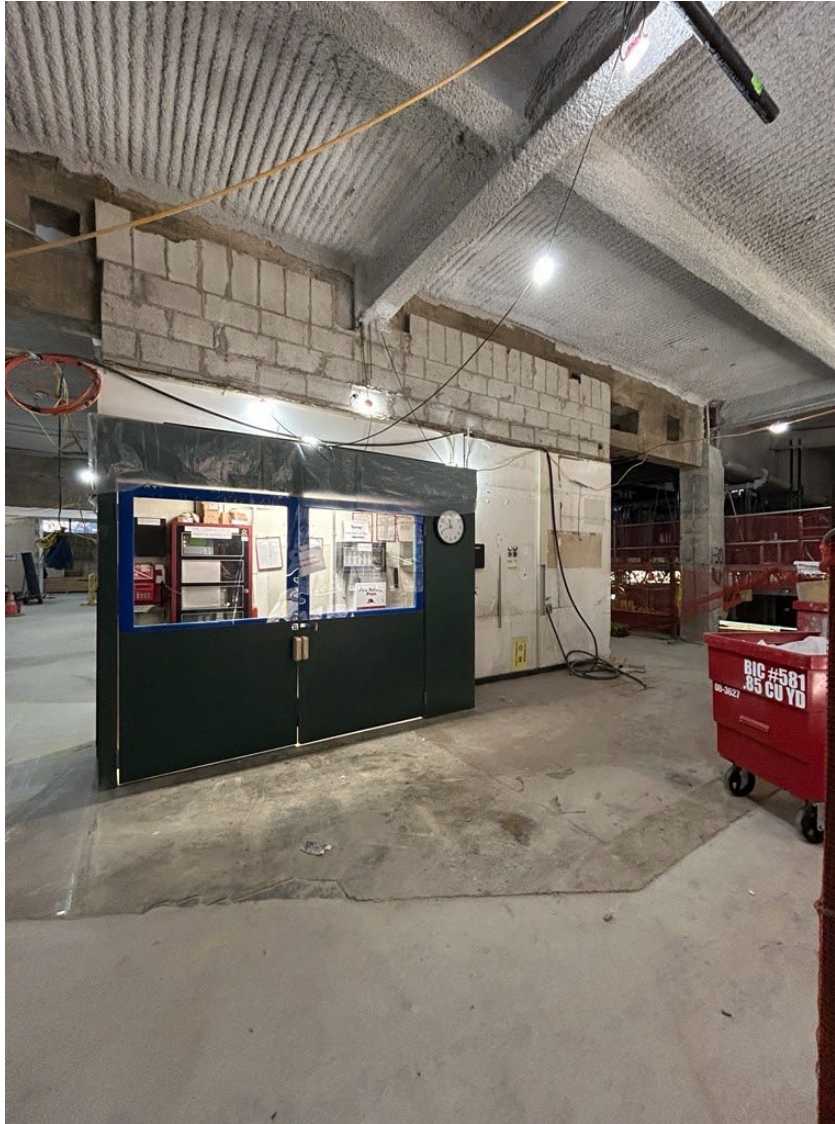
View of Schimmel Theatre audience from Gold Street

1 Pace Plaza East Renovation - Progress Photos

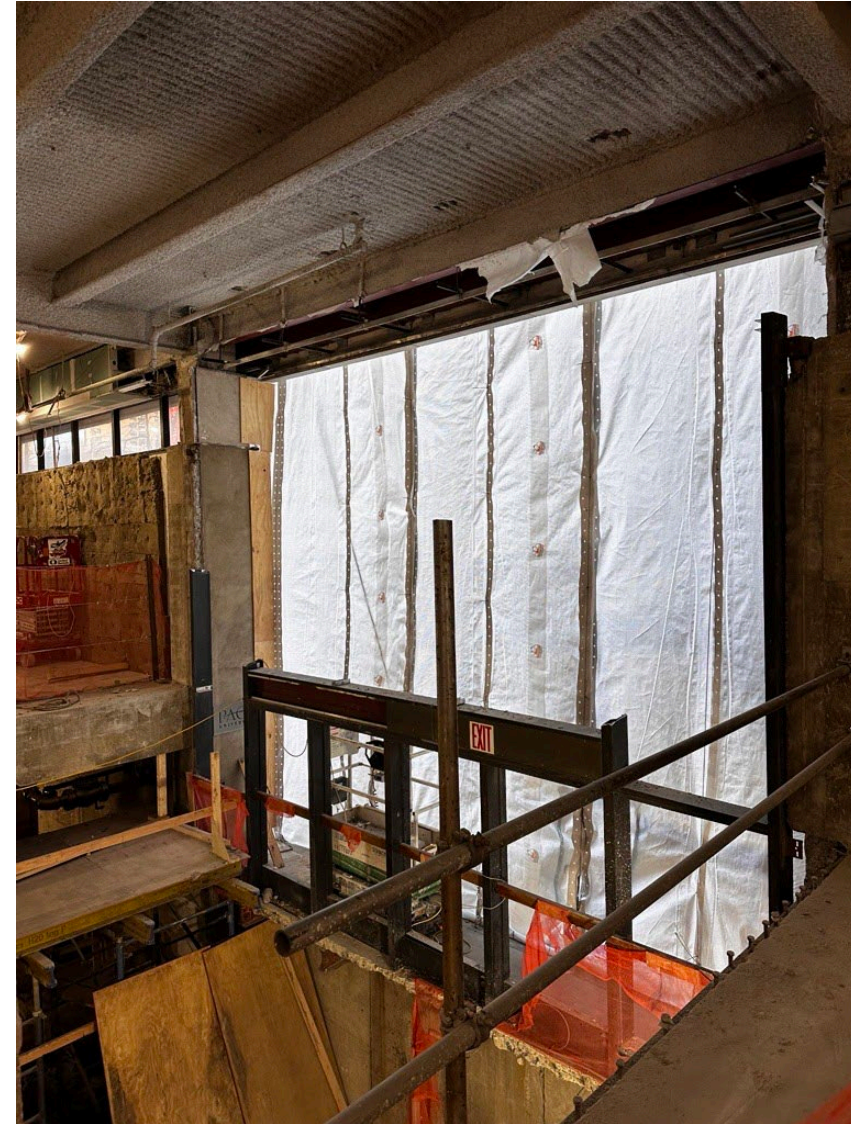


View of the future fly-tower above the stage in Schimmel Theatre

1 Pace Plaza East Renovation - Progress Photos

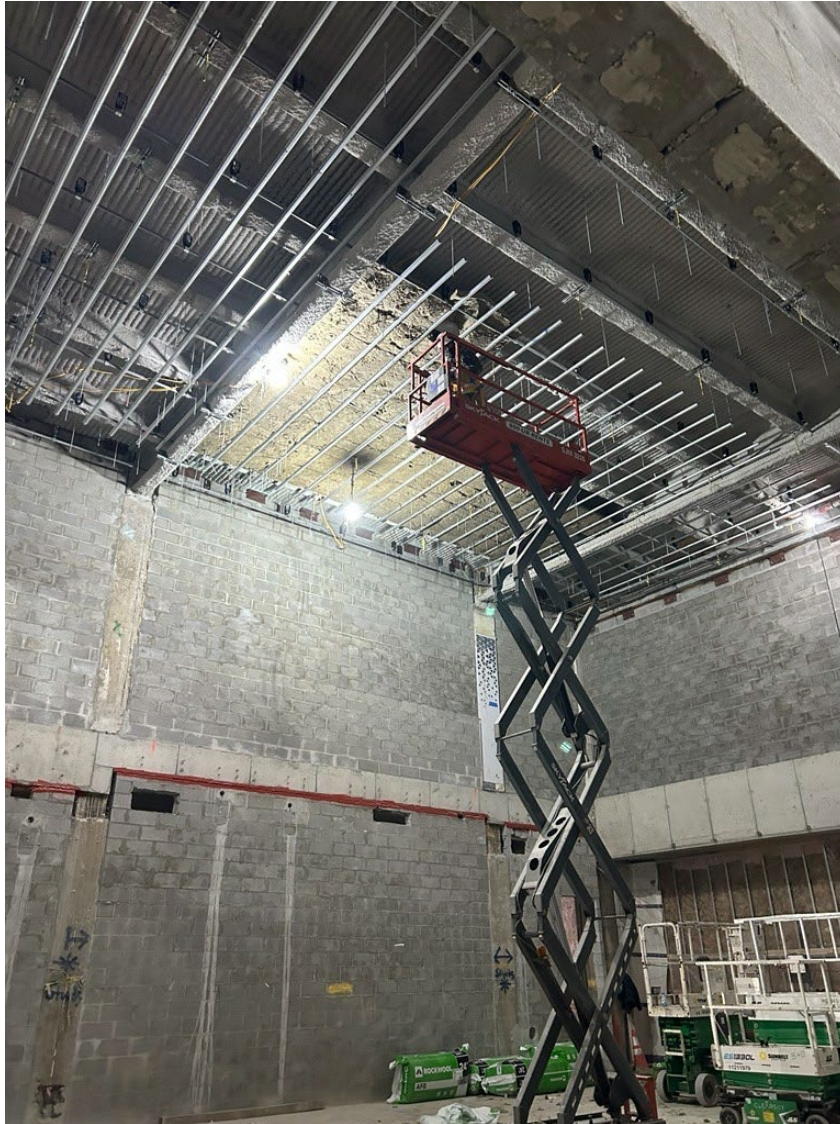


3 Spruce FDNY panel now within protection
(Fire Life Safety Director is now stationed at 9 Spruce Street)

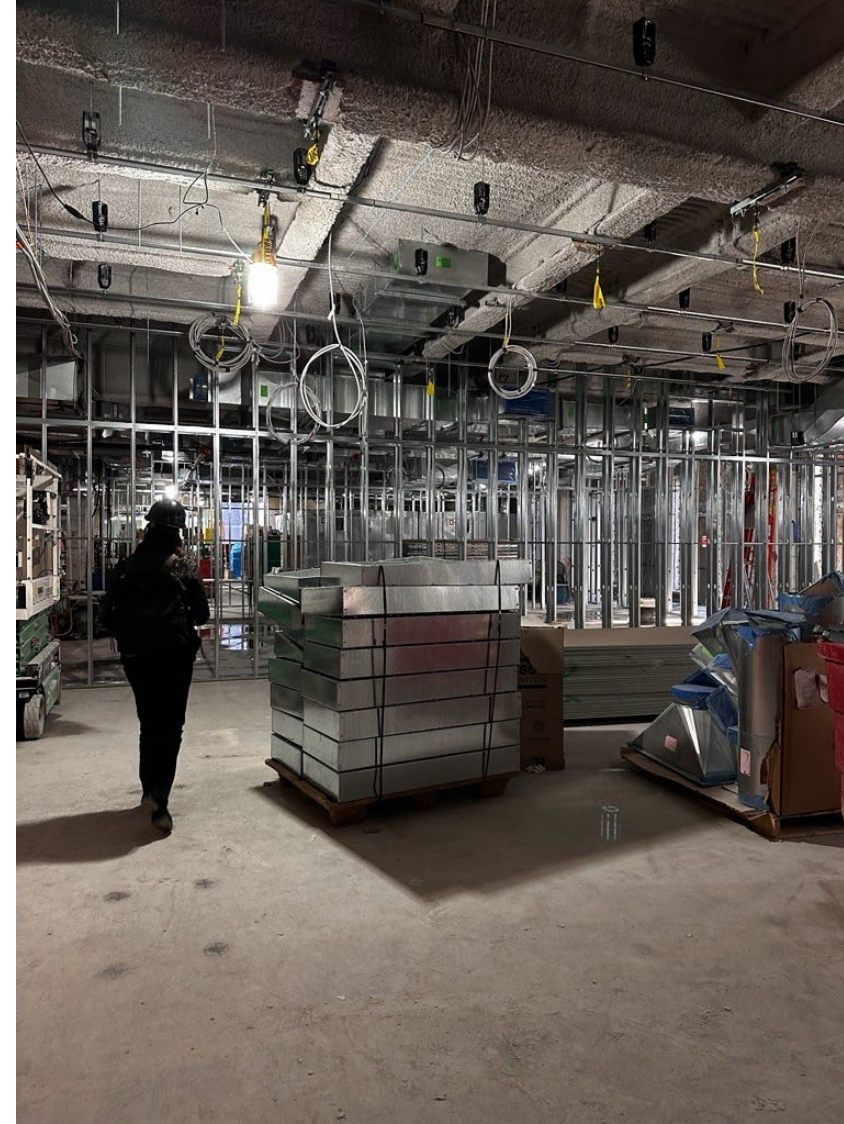


Future grand stair from G to C levels

1 Pace Plaza East Renovation - Progress Photos

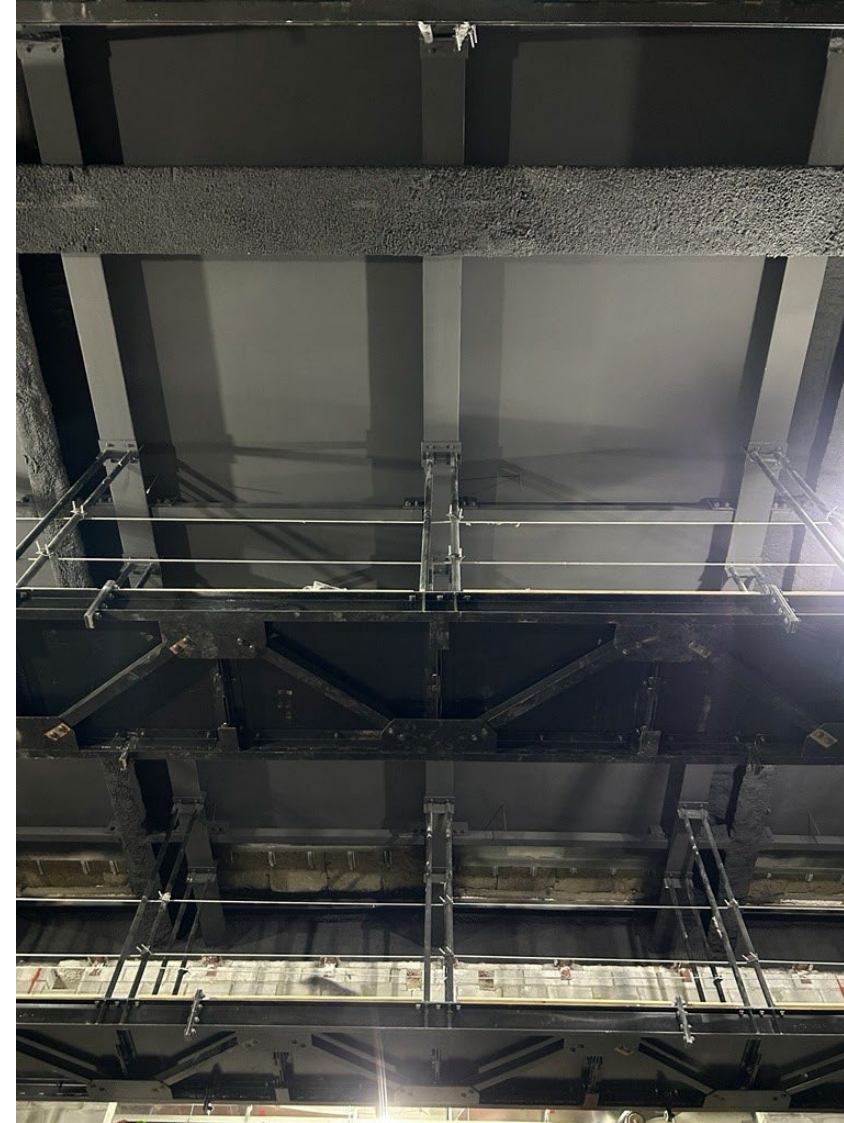
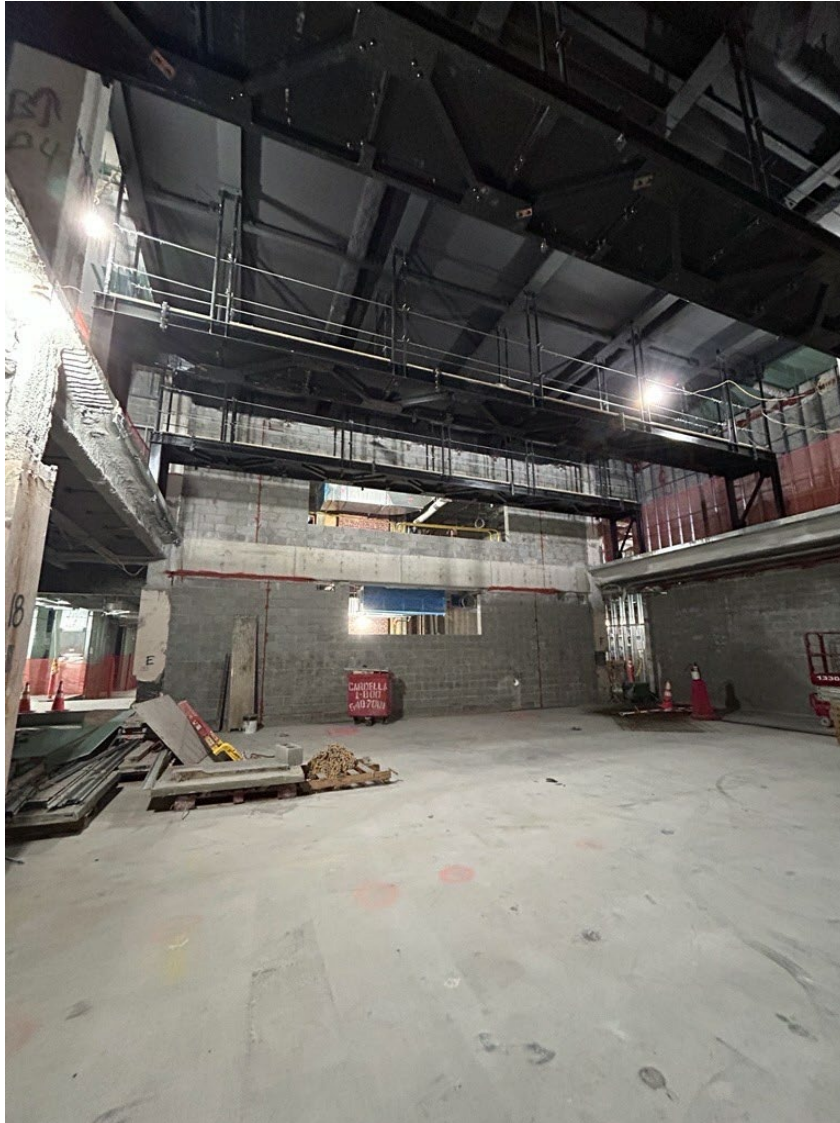


Insulation and ceiling installation in Small Venue



Carpentry & MEP installation ongoing throughout the Podium

1 Pace Plaza East Renovation - Progress Photos



Intumescent painted steel beams in Medium Venue.