

How to Set Up Exchange E-Mail on an Android Device

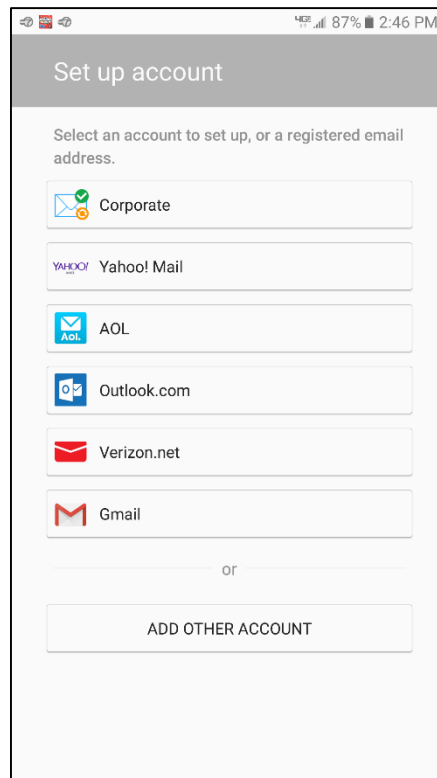
Introduction

Pace Students, Faculty, and Staff can set up their Exchange email account on their Android device using Exchange ActiveSync.

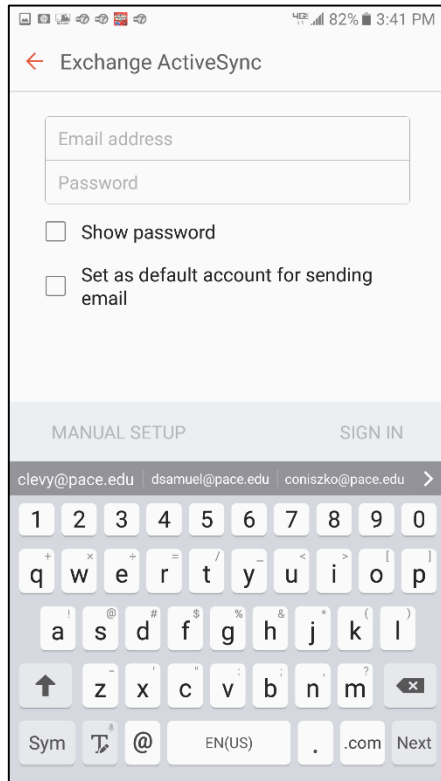
Setting Up ActiveSync on an Android Device

- Launch the **Email App**

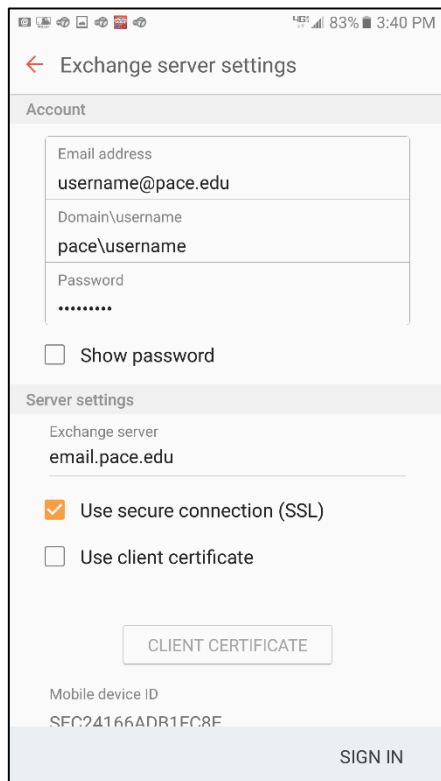
The Set up account screen displays



- Select **Corporate**



- Type your full *Pace email address* and *Password*
- Click **OK** when prompted on the Email
- Click **Continue**



- Type *pace\your username* in the **Domain\Username field**
- Type your *Pace Password*
- Type *email.pace.edu* in the **Exchange server field**
- Click **SIGN IN**

Your Pace Exchange email account is now connected.